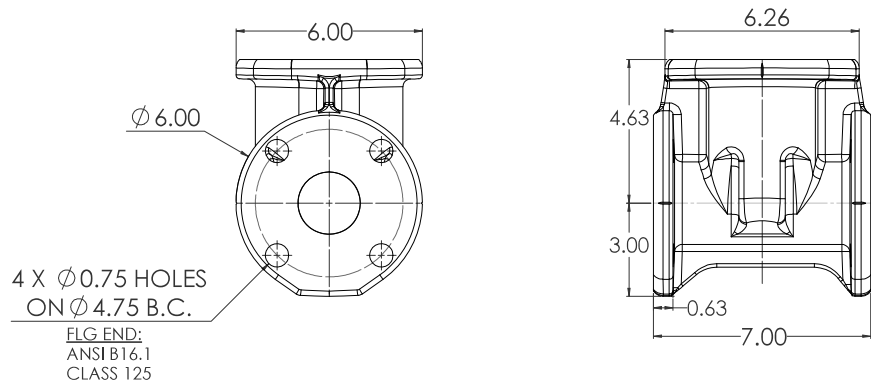
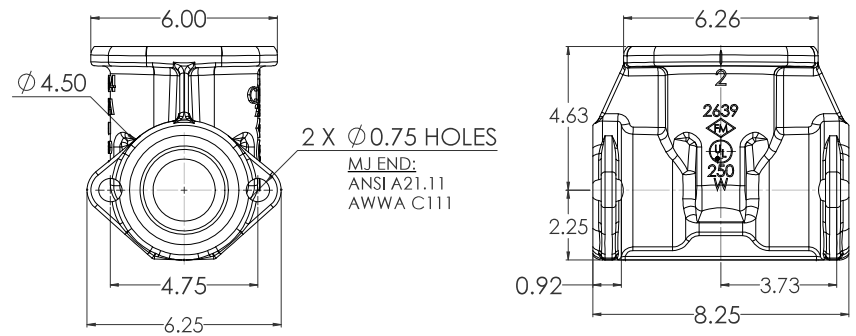


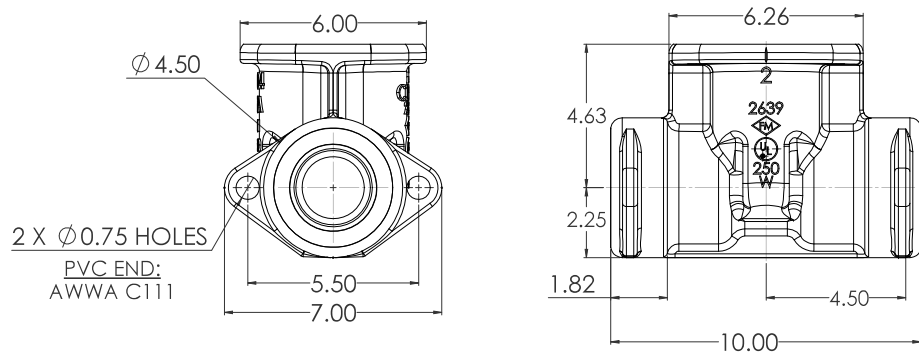
02" C509 FLG X FLG



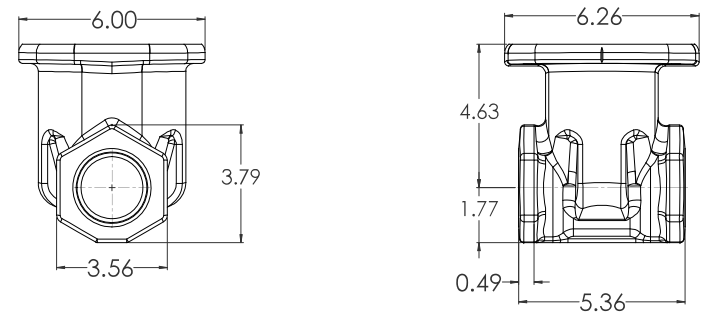
02" C509 MJ X MJ



02" C509 PVC X PVC

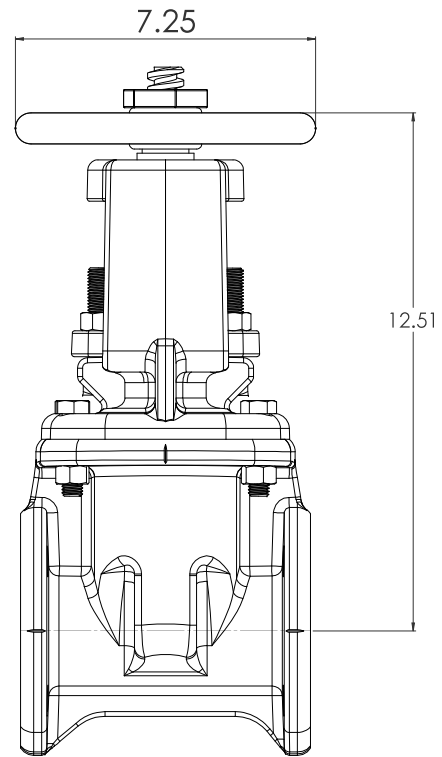
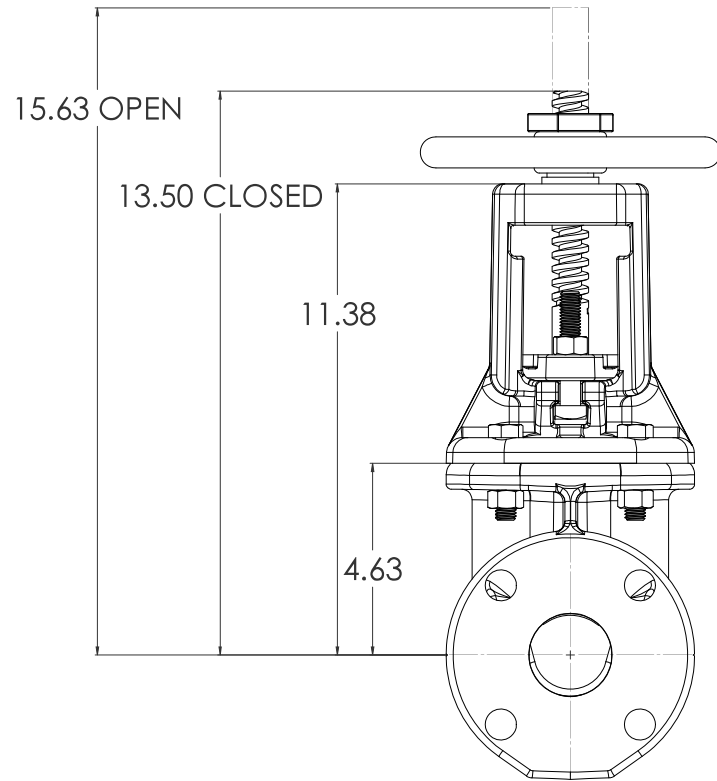


02" C509 THRD X THRD

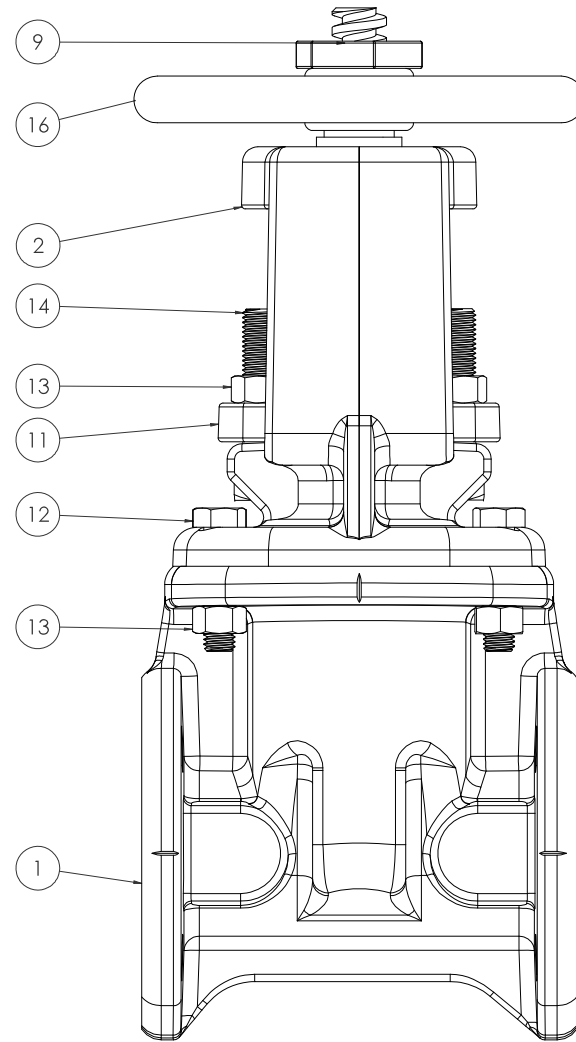
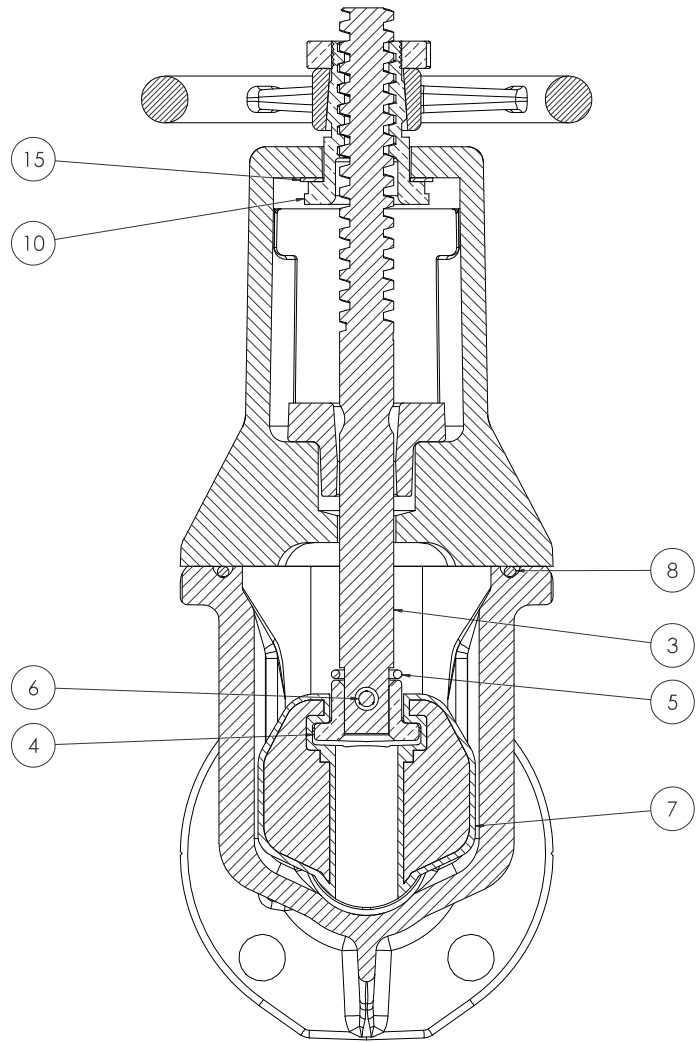


COMPANY: OS&Y RESILIENT ADDRESS: 1221/20200 CITY: CW		PROJECT: 02" C509 OS&Y RESILIENT TITLE: LBS. WEDGE GATE VALVE		SHEET NO: 5 OF: 5
DATE: 12/1/2020 DRAWN BY: SP CHECKED BY: SP APPROVED BY: SP	DATE: 12/1/2020 DRAWN BY: SP CHECKED BY: SP APPROVED BY: SP	SCALE: 1:2	PROJECT NO: 1221/20200	SHEET NO: 5 OF: 5

OS&Y WITH HANDWHEEL



COMPANY: WILSON JONES & COMPANY ADDRESS: 1000 W. 10TH ST., SUITE 100 DENVER, CO 80202		PHONE: (303) 733-1111 FAX: (303) 733-1112 WWW: www.wilsonjones.com	
DATE: 11/10/10 DRAWN: J. J. JONES CHECKED: J. J. JONES APPROVED: J. J. JONES	PROJECT: 1271/2010 TITLE: 02" C509 OS&Y RESILIENT LBS. WEDGE GATE VALVE	SCALE: T:10 SHEET NO.: 2 TOTAL SHEETS: 5	LOGO:



COMPANY: OS&Y ADDRESS: 1000 W. 10th St., Tulsa, OK 74103 PHONE: (918) 436-2000 FAX: (918) 436-2001 WWW: www.osandys.com		DIVISION: VALVES PRODUCT: WEDGE GATE VALVE MODEL: 02" C509 OS&Y RESILIENT SIZE: 02" PRESSURE: 150 MATERIAL: CAST IRON		DATE: 12/1/2020 DRAWN BY: CW CHECKED BY: 12/1/2020 SCALE: 1:5 SHEET NO.: 5 TOTAL SHEETS: 5		
--	--	--	--	---	--	--

<u>ITEM NO.</u>	<u>COMPONENT</u>	<u>QTY.</u>	<u>SIZE</u>	<u>STANDARD MATERIAL</u>	<u>MATERIAL OPTIONS</u>
1	BODY	1	-	CAST IRON	DUCTILE IRON
2	COVER	1	-	CAST IRON	DUCTILE IRON
3	STEM	1	-	C65500 (LOW ZINC)	304 SS, 316 SS
4	STEM NUT	1	-	C87850	C87610 (LOW ZINC)
5	O-RING	1	#212	EPDM	BUNA-N
6	DRIVLOK PIN	1	1/4" X 1 1/4"	18-8 SS	316 SS
7	WEDGE	1	-	EPDM/DUCTILE IRON	-
8	O-RING	1	#346	EPDM	BUNA-N
9	HANDWHEEL NUT	1	-	C87850	C87610
10	TOP STEM NUT	1	-	C86700	-
11	GLAND	1	-	CAST IRON	-
12	HEX HEAD CAP SCREW	4	1/2"-13 X 2"	18-8 SS	316 SS
13	HEX NUT	6	1/2"-13	18-SS	316 SS
14	SQUARE HEAD CAP SCREW	2	1/2"-13 X 2 3/4"	18-8 SS	316 SS
15	THRUST WASHER	1	-	ACETAL	C26000
16	HANDWHEEL	1	Ø7 1/4"	DUCTILE IRON	-

- VALVES CONFORM WITH THE FOLLOWING STANDARDS
 - NSF 61
- LOW ZINC BRASS STEM AND AVAILABLE
- 100% DOMESTIC FASTENERS AND ORINGS OPTIONS AVAILABLE
- *OPEN LEFT* (COUNTERCLOCKWISE) AND *OPEN RIGHT* (CLOCKWISE) OPTIONS AVAILABLE
- TURNS TO OPEN FROM FULLY CLOSED: 5
- AWWA MAXIMUM ALLOWABLE CLOSING TORQUE 20 FT-LBS

02" C509 OS&Y RESILIENT WEDGE GATE VALVE LBS.		4 5	
DATE: 12/1/2020 TIME: 10:00 AM USER: CW	PROJECT: 1571/2020	T:10	SolidWorks 2016 SP2