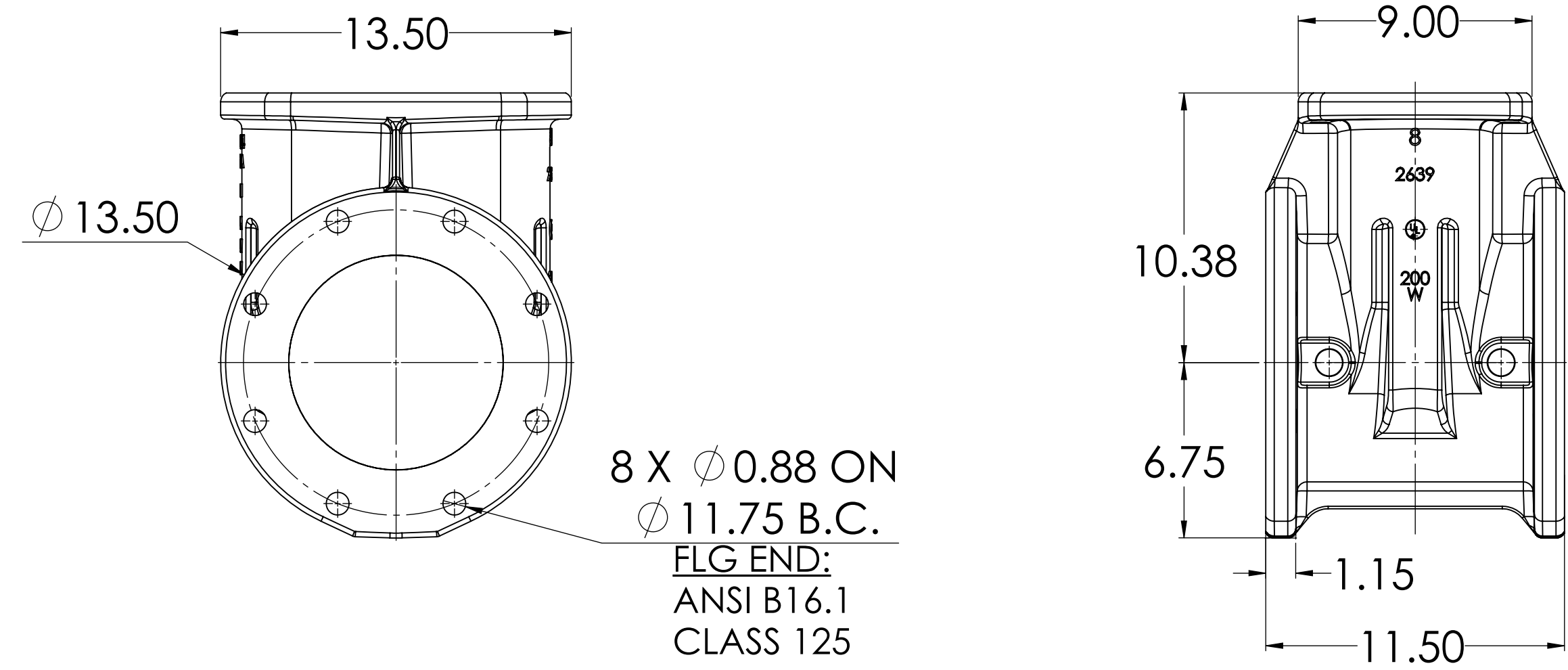
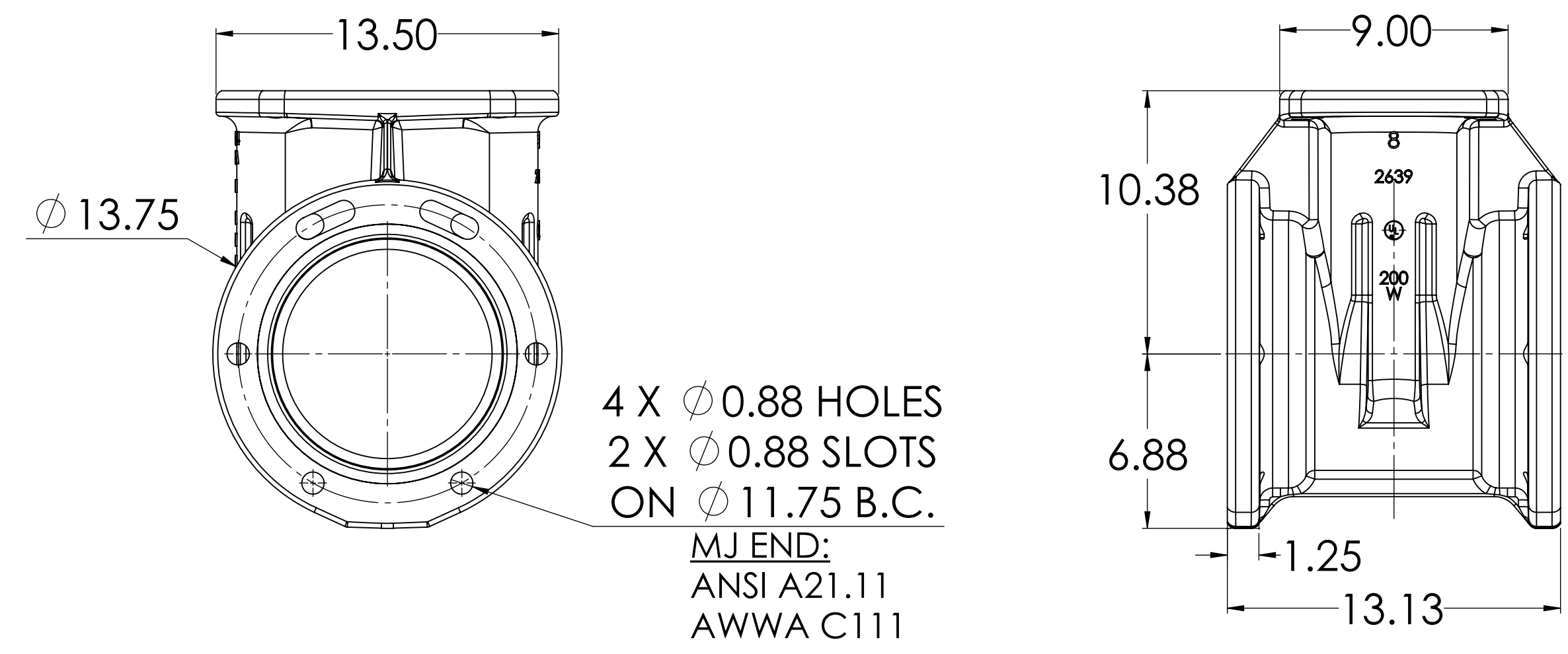


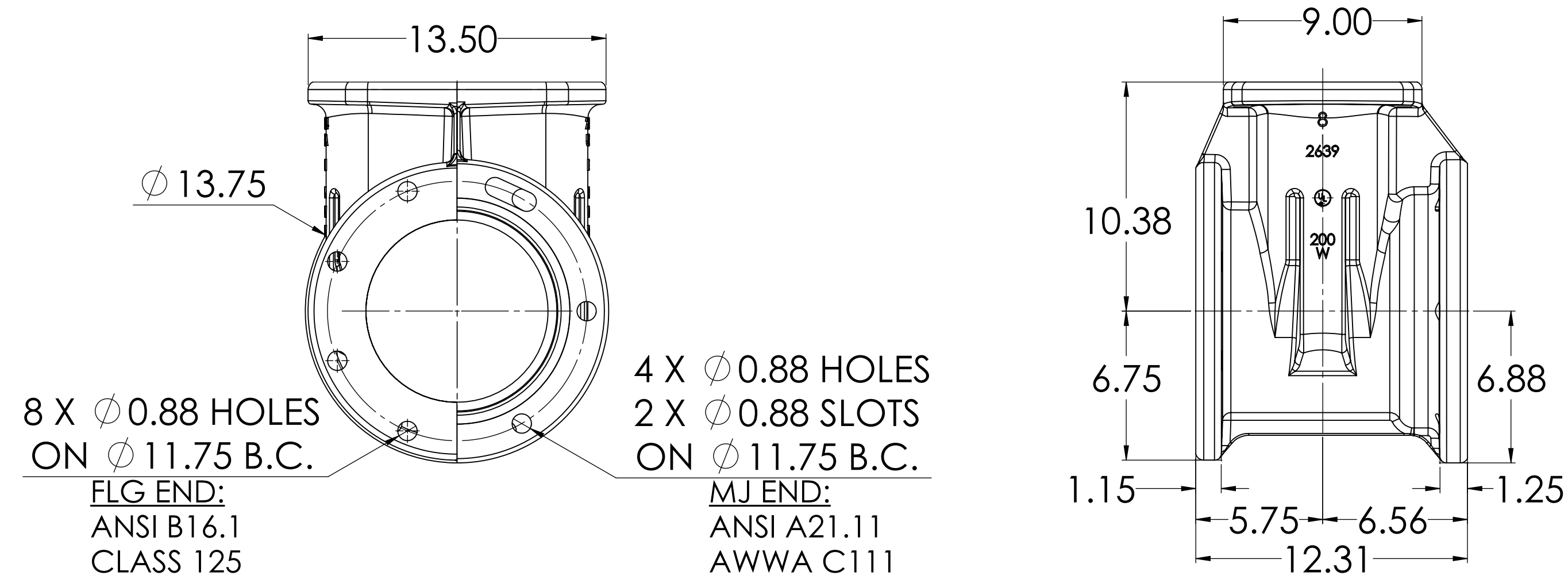
08" C509 FLG X FLG



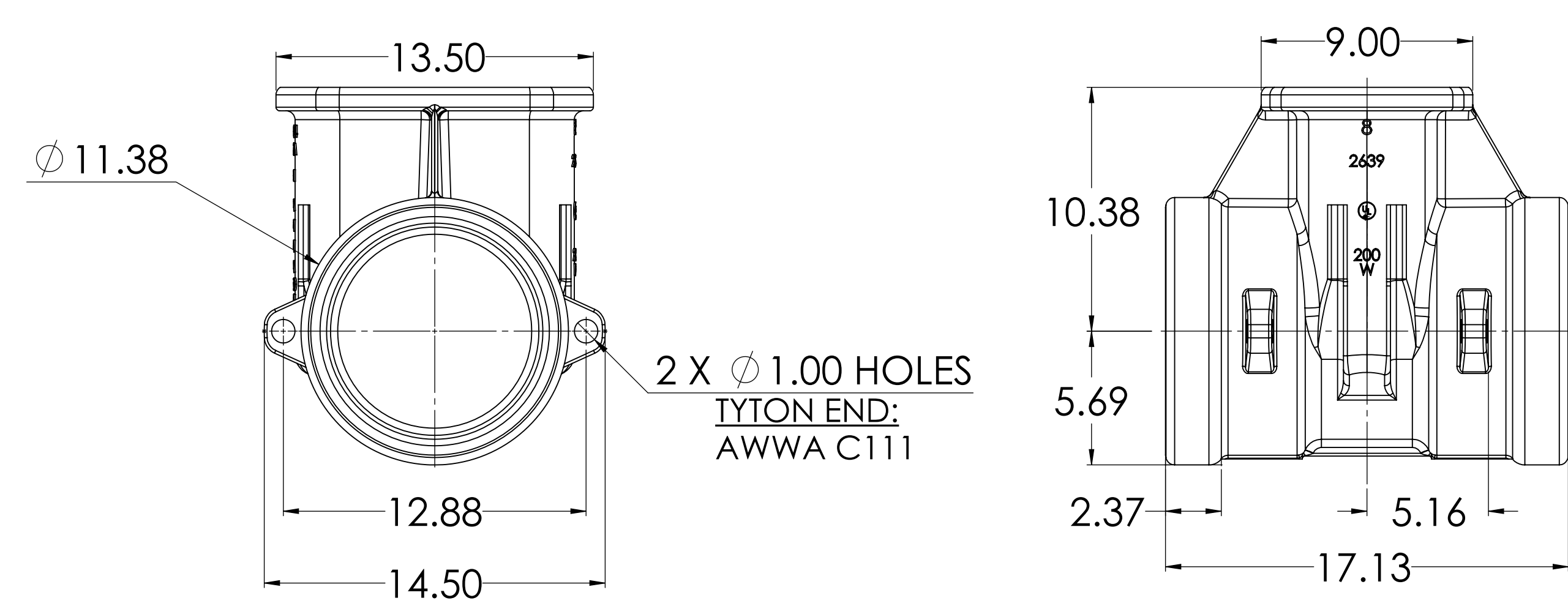
08" C509 MJ X MJ



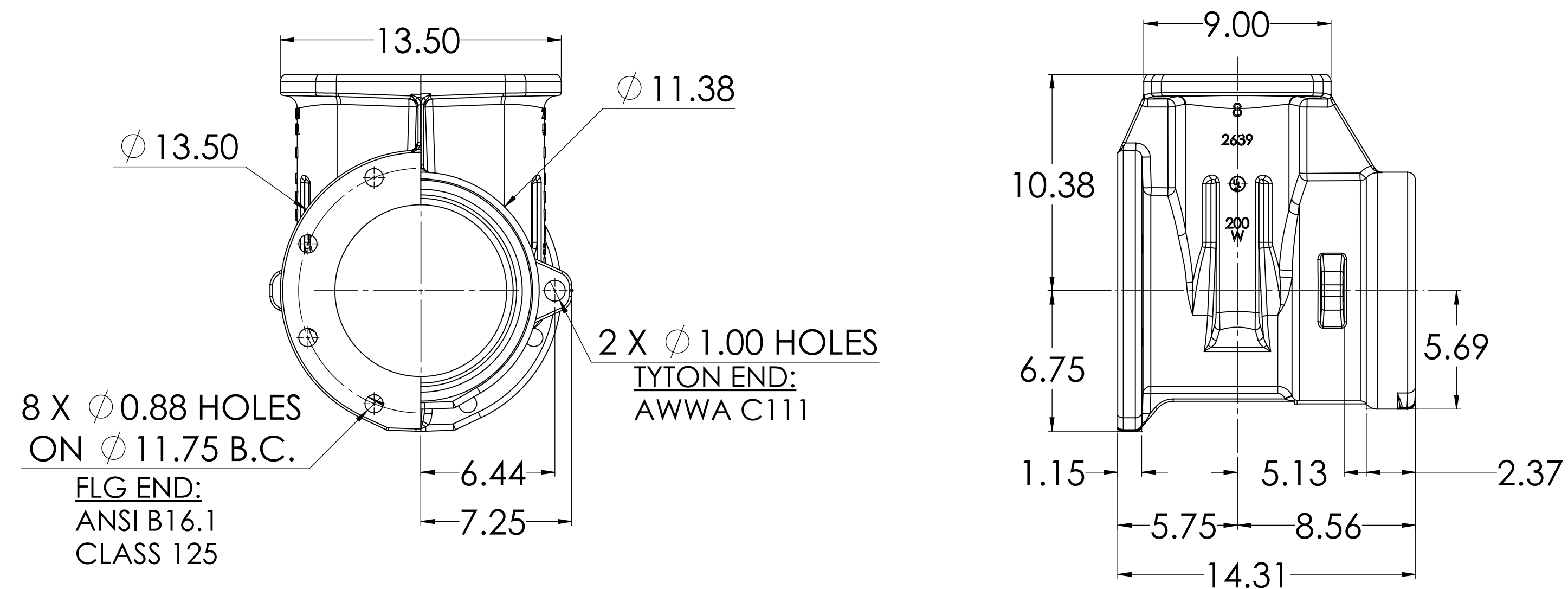
08" C509 FLG X MJ



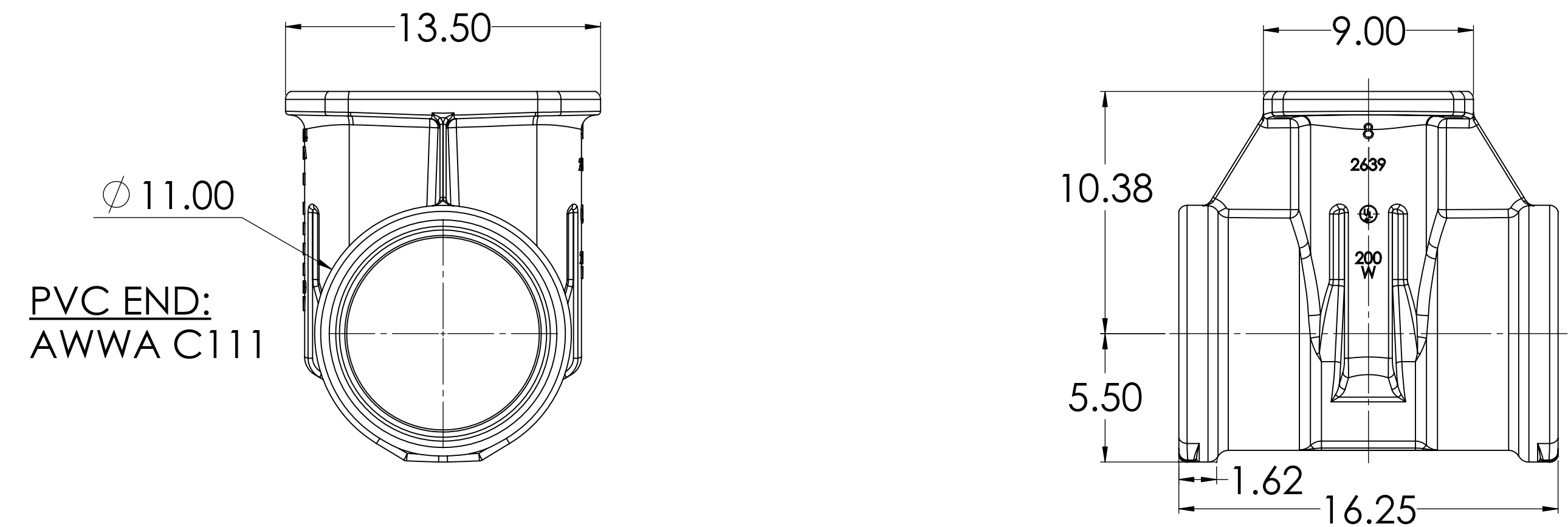
08" C509 TYTON X TYTON



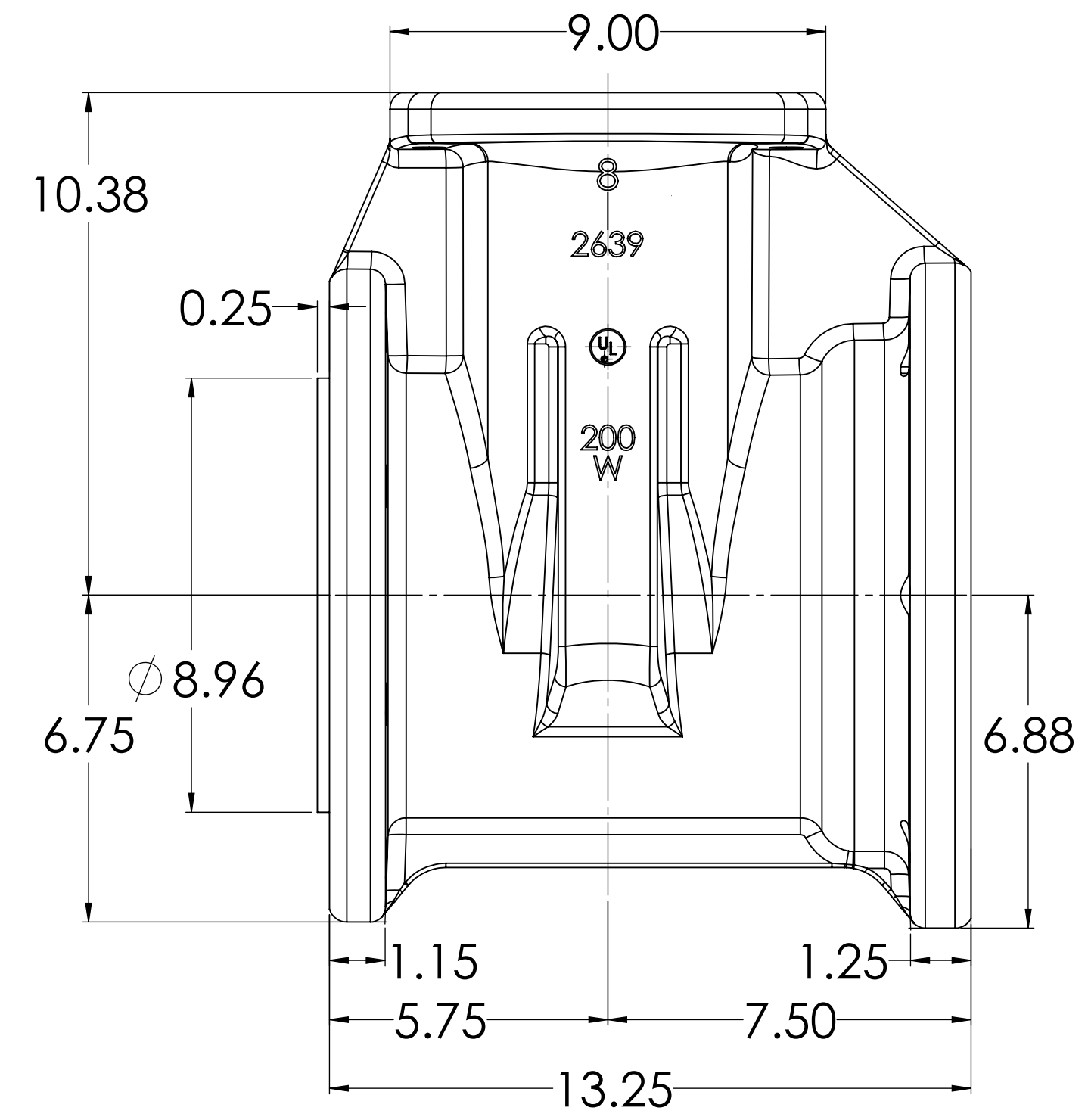
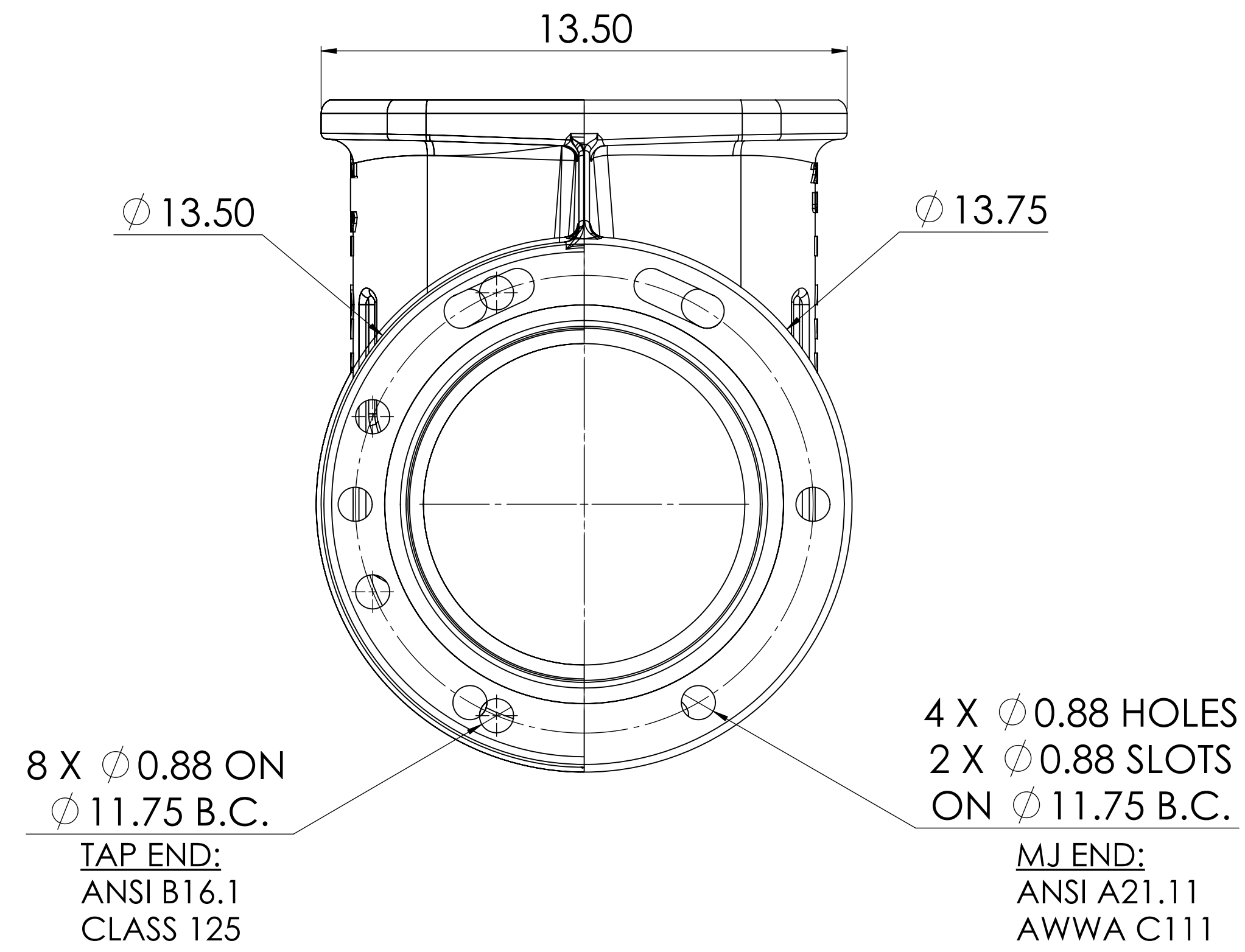
08" C509 FLG X TYTON



08" C509 PVC X PVC

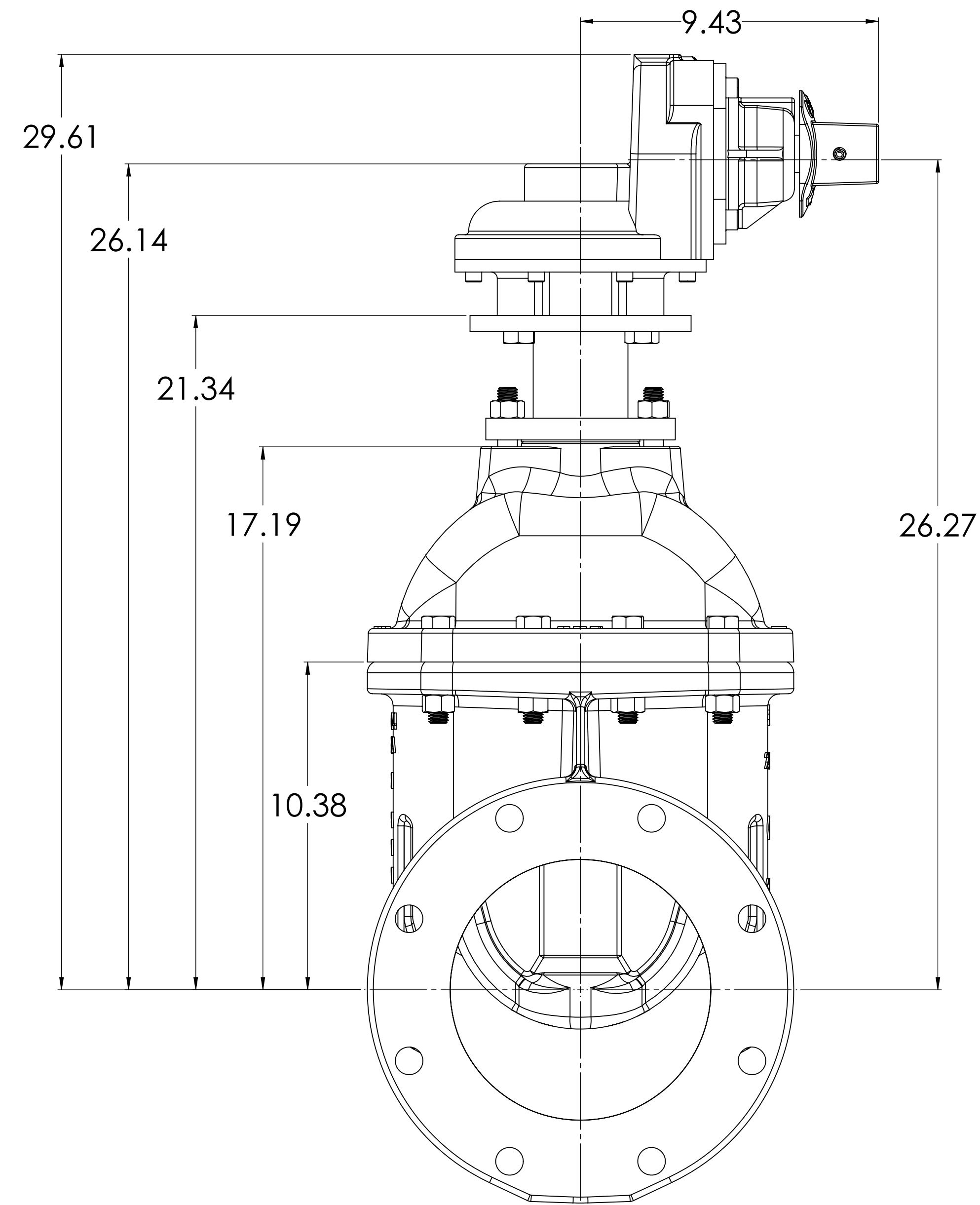


08" C509 MJ X TAP

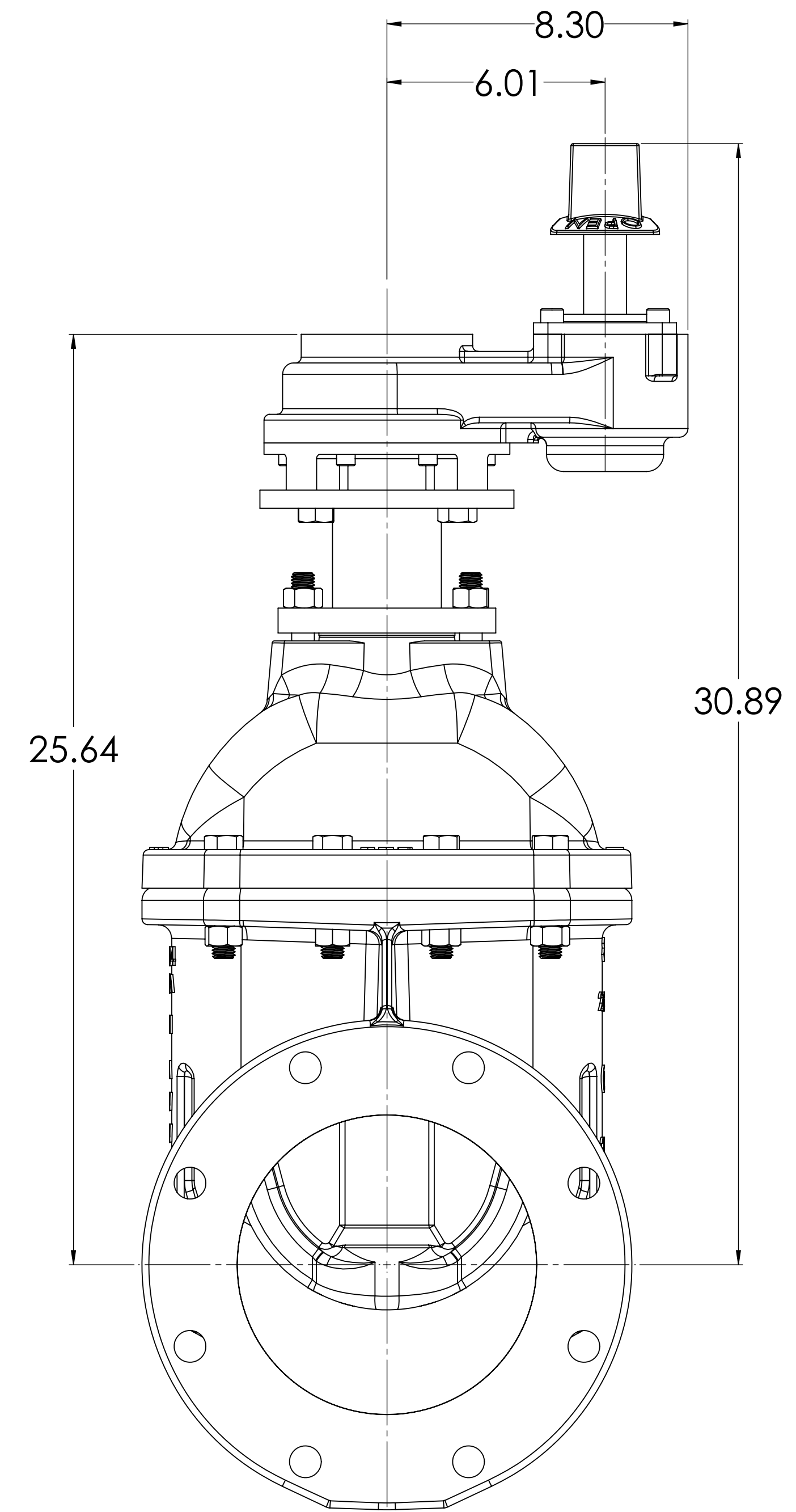


THIRD ANGLE PROJECTION. STANDARDS: ANSI/ASME Y14.100, Y14.1M, AND Y14.1M-1. TOLERANCES AS FOLLOWS UNLESS OTHERWISE SPECIFIED.		PROPERTY OF MCWANE CORPORATION. ALL DIMENSIONS AND IDENTIFICATION ARE PROPRIETARY TO MCWANE CORPORATION AND IS UNREPRODUCIBLE WITHOUT PERMISSION FROM MCWANE CORPORATION OR OTHERWISE ARRANGED. ALL RIGHTS RESERVED.		MATERIAL: C				
CASTING TOLERANCES: 0.4": ± 0.005 0.8": ± 0.004 1.2": ± 0.003 1.6": ± 0.002 2.0": ± 0.0015 2.5": ± 0.001 3.0": ± 0.0005 3.5": ± 0.0005 4.0": ± 0.0005 4.5": ± 0.0005 5.0": ± 0.0005 5.5": ± 0.0005 6.0": ± 0.0005 6.5": ± 0.0005 7.0": ± 0.0005 7.5": ± 0.0005 8.0": ± 0.0005 8.5": ± 0.0005 9.0": ± 0.0005 9.5": ± 0.0005 10.0": ± 0.0005 10.5": ± 0.0005 11.0": ± 0.0005 11.5": ± 0.0005 12.0": ± 0.0005 12.5": ± 0.0005 13.0": ± 0.0005 13.5": ± 0.0005 14.0": ± 0.0005 14.5": ± 0.0005 15.0": ± 0.0005 15.5": ± 0.0005 16.0": ± 0.0005 16.5": ± 0.0005 17.0": ± 0.0005 17.5": ± 0.0005 18.0": ± 0.0005 18.5": ± 0.0005 19.0": ± 0.0005 19.5": ± 0.0005 20.0": ± 0.0005 20.5": ± 0.0005 21.0": ± 0.0005 21.5": ± 0.0005 22.0": ± 0.0005 22.5": ± 0.0005 23.0": ± 0.0005 23.5": ± 0.0005 24.0": ± 0.0005 24.5": ± 0.0005 25.0": ± 0.0005 25.5": ± 0.0005 26.0": ± 0.0005 26.5": ± 0.0005 27.0": ± 0.0005 27.5": ± 0.0005 28.0": ± 0.0005 28.5": ± 0.0005 29.0": ± 0.0005 29.5": ± 0.0005 30.0": ± 0.0005 30.5": ± 0.0005 31.0": ± 0.0005 31.5": ± 0.0005 32.0": ± 0.0005 32.5": ± 0.0005 33.0": ± 0.0005 33.5": ± 0.0005 34.0": ± 0.0005 34.5": ± 0.0005 35.0": ± 0.0005 35.5": ± 0.0005 36.0": ± 0.0005 36.5": ± 0.0005 37.0": ± 0.0005 37.5": ± 0.0005 38.0": ± 0.0005 38.5": ± 0.0005 39.0": ± 0.0005 39.5": ± 0.0005 40.0": ± 0.0005 40.5": ± 0.0005 41.0": ± 0.0005 41.5": ± 0.0005 42.0": ± 0.0005 42.5": ± 0.0005 43.0": ± 0.0005 43.5": ± 0.0005 44.0": ± 0.0005 44.5": ± 0.0005 45.0": ± 0.0005 45.5": ± 0.0005 46.0": ± 0.0005 46.5": ± 0.0005 47.0": ± 0.0005 47.5": ± 0.0005 48.0": ± 0.0005 48.5": ± 0.0005 49.0": ± 0.0005 49.5": ± 0.0005 50.0": ± 0.0005 50.5": ± 0.0005 51.0": ± 0.0005 51.5": ± 0.0005 52.0": ± 0.0005 52.5": ± 0.0005 53.0": ± 0.0005 53.5": ± 0.0005 54.0": ± 0.0005 54.5": ± 0.0005 55.0": ± 0.0005 55.5": ± 0.0005 56.0": ± 0.0005 56.5": ± 0.0005 57.0": ± 0.0005 57.5": ± 0.0005 58.0": ± 0.0005 58.5": ± 0.0005 59.0": ± 0.0005 59.5": ± 0.0005 60.0": ± 0.0005 60.5": ± 0.0005 61.0": ± 0.0005 61.5": ± 0.0005 62.0": ± 0.0005 62.5": ± 0.0005 63.0": ± 0.0005 63.5": ± 0.0005 64.0": ± 0.0005 64.5": ± 0.0005 65.0": ± 0.0005 65.5": ± 0.0005 66.0": ± 0.0005 66.5": ± 0.0005 67.0": ± 0.0005 67.5": ± 0.0005 68.0": ± 0.0005 68.5": ± 0.0005 69.0": ± 0.0005 69.5": ± 0.0005 70.0": ± 0.0005 70.5": ± 0.0005 71.0": ± 0.0005 71.5": ± 0.0005 72.0": ± 0.0005 72.5": ± 0.0005 73.0": ± 0.0005 73.5": ± 0.0005 74.0": ± 0.0005 74.5": ± 0.0005 75.0": ± 0.0005 75.5": ± 0.0005 76.0": ± 0.0005 76.5": ± 0.0005 77.0": ± 0.0005 77.5": ± 0.0005 78.0": ± 0.0005 78.5": ± 0.0005 79.0": ± 0.0005 79.5": ± 0.0005 80.0": ± 0.0005 80.5": ± 0.0005 81.0": ± 0.0005 81.5": ± 0.0005 82.0": ± 0.0005 82.5": ± 0.0005 83.0": ± 0.0005 83.5": ± 0.0005 84.0": ± 0.0005 84.5": ± 0.0005 85.0": ± 0.0005 85.5": ± 0.0005 86.0": ± 0.0005 86.5": ± 0.0005 87.0": ± 0.0005 87.5": ± 0.0005 88.0": ± 0.0005 88.5": ± 0.0005 89.0": ± 0.0005 89.5": ± 0.0005 90.0": ± 0.0005 90.5": ± 0.0005 91.0": ± 0.0005 91.5": ± 0.0005 92.0": ± 0.0005 92.5": ± 0.0005 93.0": ± 0.0005 93.5": ± 0.0005 94.0": ± 0.0005 94.5": ± 0.0005 95.0": ± 0.0005 95.5": ± 0.0005 96.0": ± 0.0005 96.5": ± 0.0005 97.0": ± 0.0005 97.5": ± 0.0005 98.0": ± 0.0005 98.5": ± 0.0005 99.0": ± 0.0005 99.5": ± 0.0005 100.0": ± 0.0005	MACHINED DIMENSIONS: DECIMALS: ± 0.005 FRACTIONS: ± 0.004 ANGLE: ± 1° SURFACE FINISH: 125 μin RAD: ± 0.001	ESTIMATED WEIGHT: LBS.	DESCRIPTION: 08" C509 NRS GEARED RESILIENT WEDGE GATE VALVE	SHEET NO: 2	SHEET OF: 8	DATE: 12/2/2020 DRAWN BY: CW CHECKED BY: [blank] APPROVED BY: [blank]	SCALE: 1:5 SOFTWARE: Solidworks 2018 SP2	

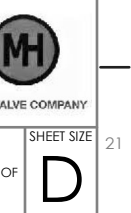
BEVEL GEAR WITH OPERATING NUT



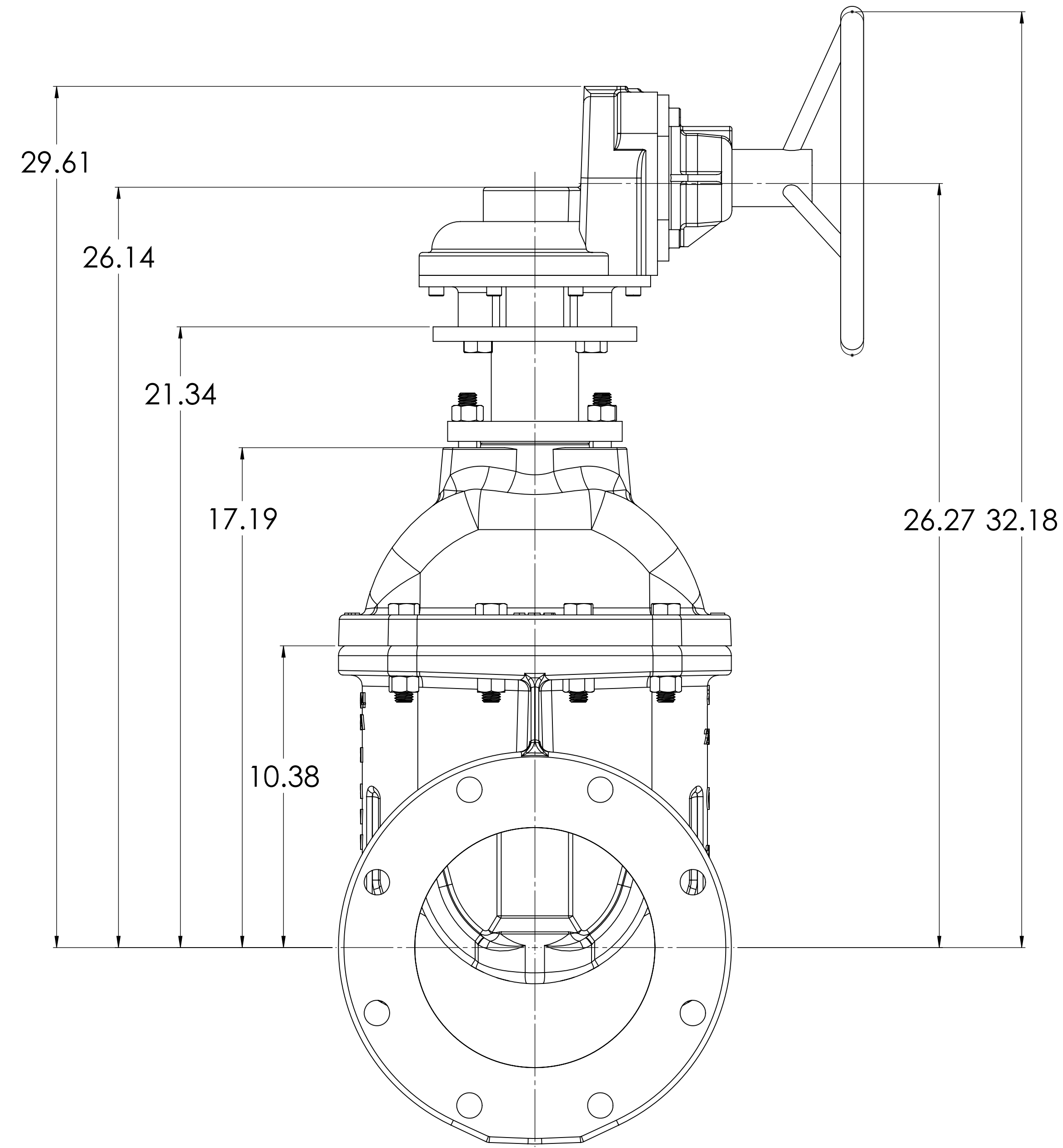
SPUR GEAR WITH OPERATING NUT



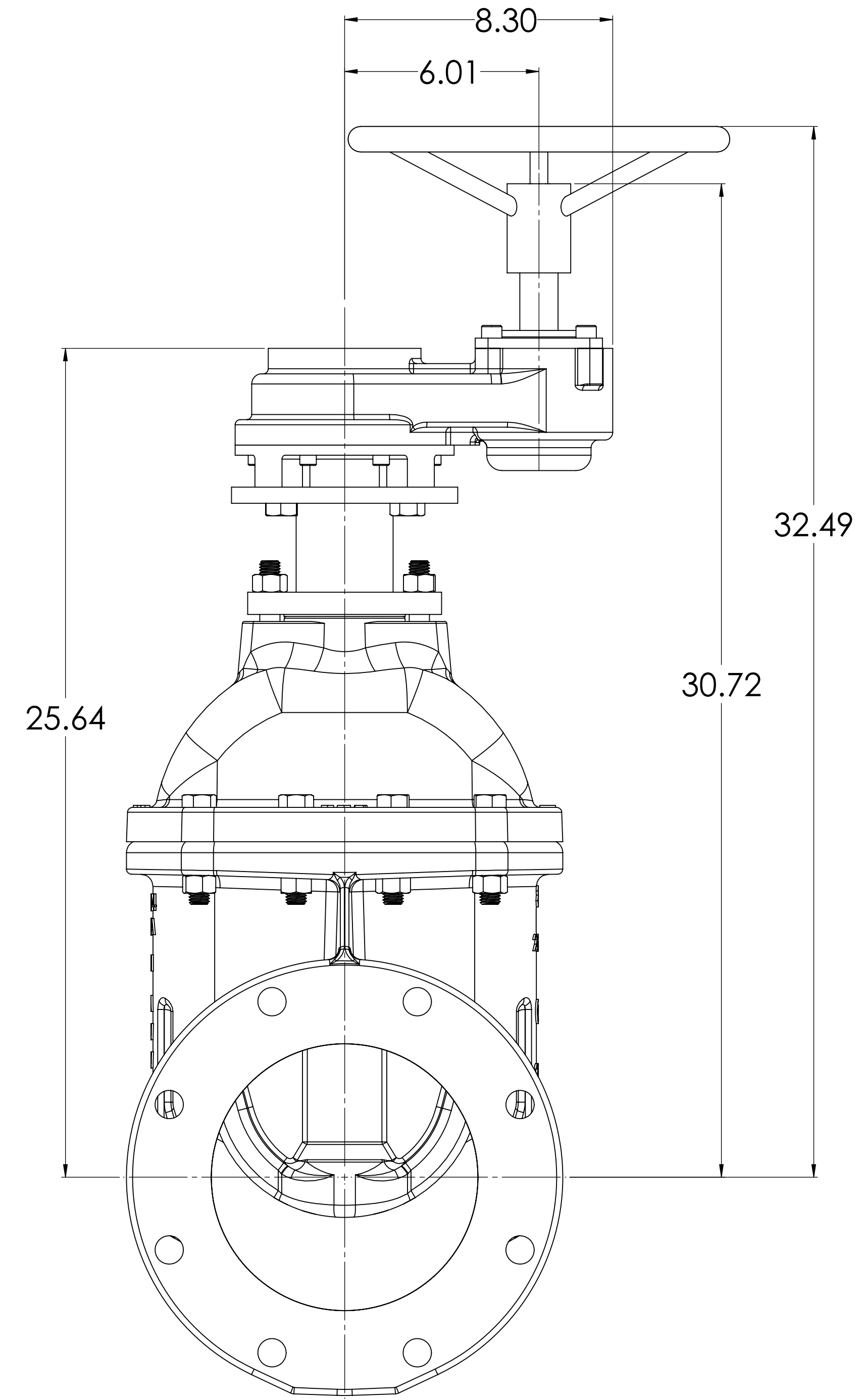
THIRD ANGLE PROJECTION STANDARD: ANSI/ASME Y14.100, Y14.101 AND Y14.104 TOLERANCES AS FOLLOWS UNLESS OTHERWISE SPECIFIED.		PROPERTY OF MCWANE CORPORATION. ALL DIMENSIONS AND IDENTIFICATION ARE PROPRIETARY TO MCWANE CORPORATION AND IS UNREPRODUCIBLE WITHOUT PERMISSION FROM MCWANE CORPORATION. ALL RIGHTS RESERVED.		SHEET NO. C
CASTING TOLERANCES: 0.4": ± 0.012 0.8": ± 0.015 1.2": ± 0.020 1.8": ± 0.025 MIN RADIUS: 1/8" MIN DRAFT: 2°	MACHINED DIMENSIONS: DECIMALS: ± 0.005 FRACTIONS: ± 0.004 ANGLE: ± 1° SURFACE FINISH: 125 μin RADIUS: 1/8" MIN DRAFT: 2°	ESTIMATED WEIGHT: LBS.	DESCRIPTION: 08" C509 NRS GEARED RESILIENT WEDGE GATE VALVE	SHEET SIZE 3 SHEET OF 8
DESIGNED BY: CW	DATE DRAWN: 12/2/2020	CHECKED BY: CKE	SCALE: 1:5	SOFTWARE: Solidworks 2018 SP2



BEVEL GEAR WITH HANDWHEEL

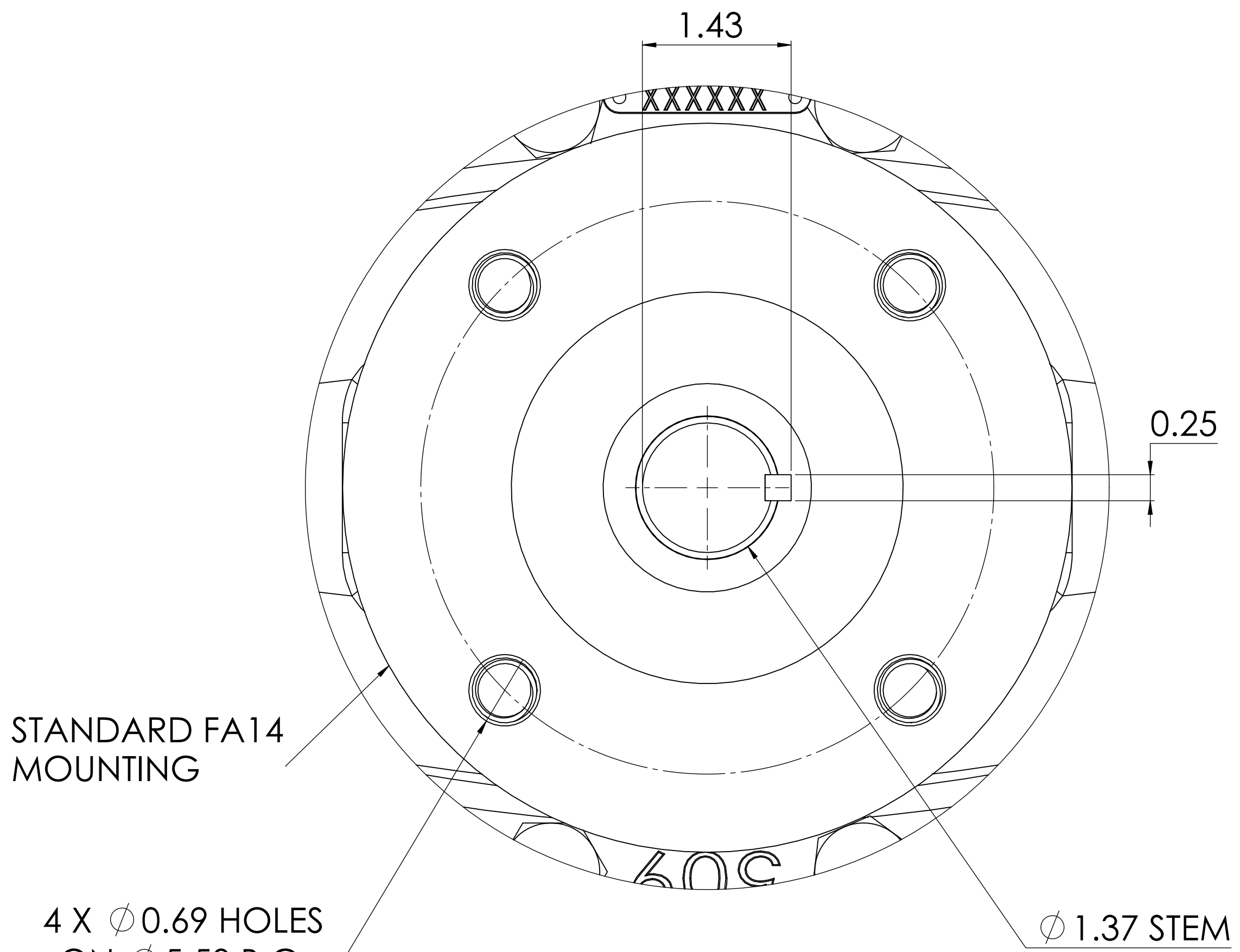
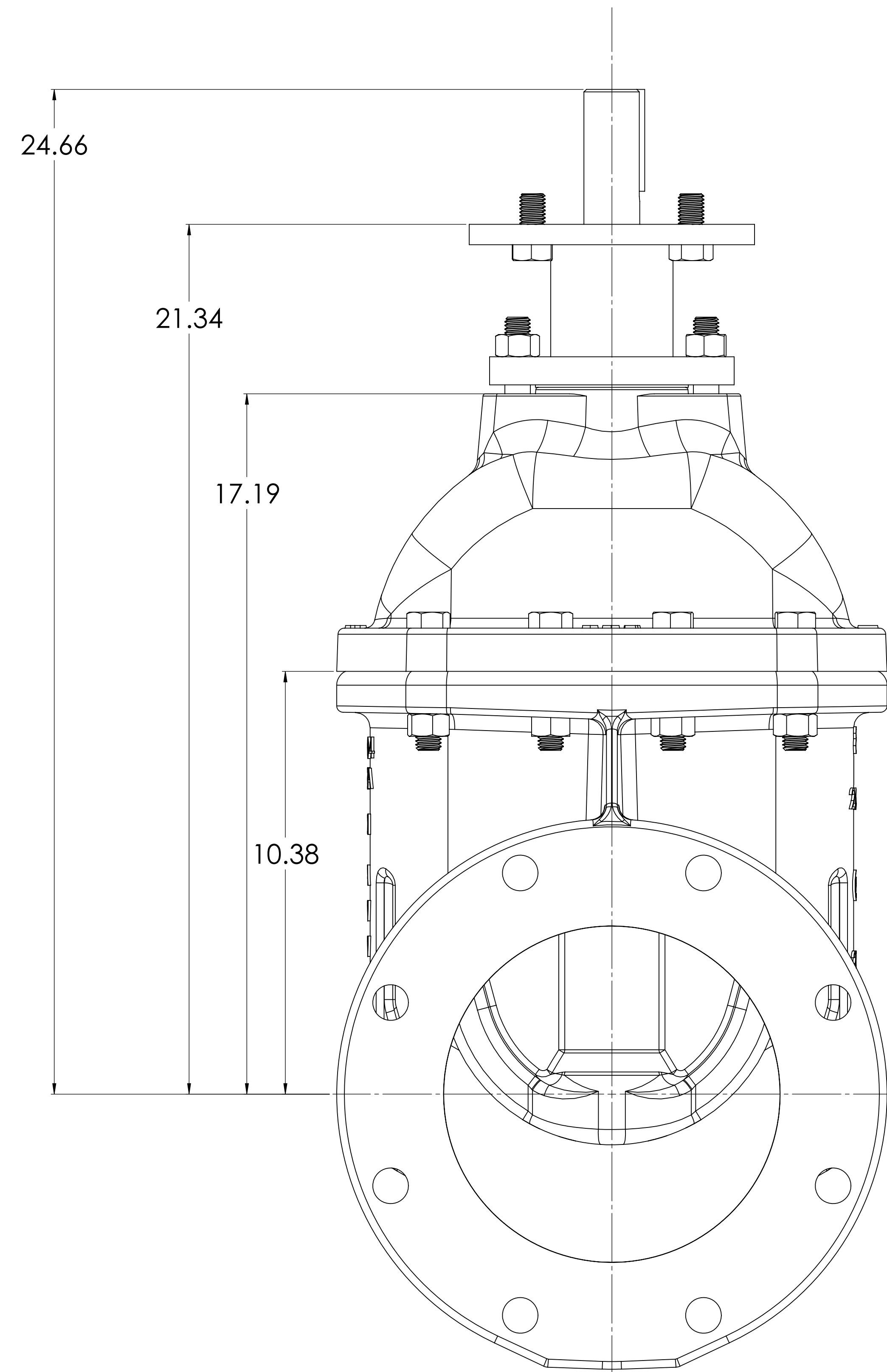


SPUR GEAR WITH HANDWHEEL



STANDARDS AND DIMENSIONS SHALL BE IN ACCORDANCE WITH THE ASME Y14.5-2018 DIMENSIONING AND TOLERANCING PRACTICES UNLESS OTHERWISE SPECIFIED.		PROPERTY OF MCWANE CORPORATION. ALL RIGHTS AND INTERESTS ARE RESERVED. THIS DRAWING IS THE PROPERTY OF MCWANE CORPORATION AND IS UNCLASSIFIED. IT IS TO BE KEPT CONFIDENTIAL AND NOT TO BE REPRODUCED OR TRANSMITTED IN ANY FORM OR BY ANY MEANS, ELECTRONIC OR MECHANICAL, INCLUDING PHOTOCOPYING, RECORDING, OR BY ANY INFORMATION STORAGE AND RETRIEVAL SYSTEM, WITHOUT THE WRITTEN PERMISSION OF MCWANE CORPORATION. ALL RIGHTS RESERVED.		DESCRIPTION	DATE
Casting Tolerances		Machined Dimensions		08" C509 NRS GEARED RESILIENT WEDGE GATE VALVE	12/2/2020
0.4"	± 0.005	0.4"	± 0.005	ESTIMATED WEIGHT	
0.8"	± 0.005	0.8"	± 0.005	LBS.	
1.2"	± 0.005	1.2"	± 0.005		
1.6"	± 0.005	1.6"	± 0.005		
2.0"	± 0.005	2.0"	± 0.005		
2.4"	± 0.005	2.4"	± 0.005		
2.8"	± 0.005	2.8"	± 0.005		
3.2"	± 0.005	3.2"	± 0.005		
3.6"	± 0.005	3.6"	± 0.005		
4.0"	± 0.005	4.0"	± 0.005		
4.4"	± 0.005	4.4"	± 0.005		
4.8"	± 0.005	4.8"	± 0.005		
5.2"	± 0.005	5.2"	± 0.005		
5.6"	± 0.005	5.6"	± 0.005		
6.0"	± 0.005	6.0"	± 0.005		
6.4"	± 0.005	6.4"	± 0.005		
6.8"	± 0.005	6.8"	± 0.005		
7.2"	± 0.005	7.2"	± 0.005		
7.6"	± 0.005	7.6"	± 0.005		
8.0"	± 0.005	8.0"	± 0.005		
8.4"	± 0.005	8.4"	± 0.005		
8.8"	± 0.005	8.8"	± 0.005		
9.2"	± 0.005	9.2"	± 0.005		
9.6"	± 0.005	9.6"	± 0.005		
10.0"	± 0.005	10.0"	± 0.005		
10.4"	± 0.005	10.4"	± 0.005		
10.8"	± 0.005	10.8"	± 0.005		
11.2"	± 0.005	11.2"	± 0.005		
11.6"	± 0.005	11.6"	± 0.005		
12.0"	± 0.005	12.0"	± 0.005		
12.4"	± 0.005	12.4"	± 0.005		
12.8"	± 0.005	12.8"	± 0.005		
13.2"	± 0.005	13.2"	± 0.005		
13.6"	± 0.005	13.6"	± 0.005		
14.0"	± 0.005	14.0"	± 0.005		
14.4"	± 0.005	14.4"	± 0.005		
14.8"	± 0.005	14.8"	± 0.005		
15.2"	± 0.005	15.2"	± 0.005		
15.6"	± 0.005	15.6"	± 0.005		
16.0"	± 0.005	16.0"	± 0.005		
16.4"	± 0.005	16.4"	± 0.005		
16.8"	± 0.005	16.8"	± 0.005		
17.2"	± 0.005	17.2"	± 0.005		
17.6"	± 0.005	17.6"	± 0.005		
18.0"	± 0.005	18.0"	± 0.005		
18.4"	± 0.005	18.4"	± 0.005		
18.8"	± 0.005	18.8"	± 0.005		
19.2"	± 0.005	19.2"	± 0.005		
19.6"	± 0.005	19.6"	± 0.005		
20.0"	± 0.005	20.0"	± 0.005		
20.4"	± 0.005	20.4"	± 0.005		
20.8"	± 0.005	20.8"	± 0.005		
21.2"	± 0.005	21.2"	± 0.005		
21.6"	± 0.005	21.6"	± 0.005		
22.0"	± 0.005	22.0"	± 0.005		
22.4"	± 0.005	22.4"	± 0.005		
22.8"	± 0.005	22.8"	± 0.005		
23.2"	± 0.005	23.2"	± 0.005		
23.6"	± 0.005	23.6"	± 0.005		
24.0"	± 0.005	24.0"	± 0.005		
24.4"	± 0.005	24.4"	± 0.005		
24.8"	± 0.005	24.8"	± 0.005		
25.2"	± 0.005	25.2"	± 0.005		
25.6"	± 0.005	25.6"	± 0.005		
26.0"	± 0.005	26.0"	± 0.005		
26.4"	± 0.005	26.4"	± 0.005		
26.8"	± 0.005	26.8"	± 0.005		
27.2"	± 0.005	27.2"	± 0.005		
27.6"	± 0.005	27.6"	± 0.005		
28.0"	± 0.005	28.0"	± 0.005		
28.4"	± 0.005	28.4"	± 0.005		
28.8"	± 0.005	28.8"	± 0.005		
29.2"	± 0.005	29.2"	± 0.005		
29.6"	± 0.005	29.6"	± 0.005		
30.0"	± 0.005	30.0"	± 0.005		
30.4"	± 0.005	30.4"	± 0.005		
30.8"	± 0.005	30.8"	± 0.005		
31.2"	± 0.005	31.2"	± 0.005		
31.6"	± 0.005	31.6"	± 0.005		
32.0"	± 0.005	32.0"	± 0.005		
32.4"	± 0.005	32.4"	± 0.005		
32.8"	± 0.005	32.8"	± 0.005		
33.2"	± 0.005	33.2"	± 0.005		
33.6"	± 0.005	33.6"	± 0.005		
34.0"	± 0.005	34.0"	± 0.005		
34.4"	± 0.005	34.4"	± 0.005		
34.8"	± 0.005	34.8"	± 0.005		
35.2"	± 0.005	35.2"	± 0.005		
35.6"	± 0.005	35.6"	± 0.005		
36.0"	± 0.005	36.0"	± 0.005		
36.4"	± 0.005	36.4"	± 0.005		
36.8"	± 0.005	36.8"	± 0.005		
37.2"	± 0.005	37.2"	± 0.005		
37.6"	± 0.005	37.6"	± 0.005		
38.0"	± 0.005	38.0"	± 0.005		
38.4"	± 0.005	38.4"	± 0.005		
38.8"	± 0.005	38.8"	± 0.005		
39.2"	± 0.005	39.2"	± 0.005		
39.6"	± 0.005	39.6"	± 0.005		
40.0"	± 0.005	40.0"	± 0.005		
40.4"	± 0.005	40.4"	± 0.005		
40.8"	± 0.005	40.8"	± 0.005		
41.2"	± 0.005	41.2"	± 0.005		
41.6"	± 0.005	41.6"	± 0.005		
42.0"	± 0.005	42.0"	± 0.005		
42.4"	± 0.005	42.4"	± 0.005		
42.8"	± 0.005	42.8"	± 0.005		
43.2"	± 0.005	43.2"	± 0.005		
43.6"	± 0.005	43.6"	± 0.005		
44.0"	± 0.005	44.0"	± 0.005		
44.4"	± 0.005	44.4"	± 0.005		
44.8"	± 0.005	44.8"	± 0.005		
45.2"	± 0.005	45.2"	± 0.005		
45.6"	± 0.005	45.6"	± 0.005		
46.0"	± 0.005	46.0"	± 0.005		
46.4"	± 0.005	46.4"	± 0.005		
46.8"	± 0.005	46.8"	± 0.005		
47.2"	± 0.005	47.2"	± 0.005		
47.6"	± 0.005	47.6"	± 0.005		
48.0"	± 0.005	48.0"	± 0.005		
48.4"	± 0.005	48.4"	± 0.005		
48.8"	± 0.005	48.8"	± 0.005		
49.2"	± 0.005	49.2"	± 0.005		
49.6"	± 0.005	49.6"	± 0.005		
50.0"	± 0.005	50.0"	± 0.005		
50.4"	± 0.005	50.4"	± 0.005		
50.8"	± 0.005	50.8"	± 0.005		
51.2"	± 0.005	51.2"	± 0.005		
51.6"	± 0.005	51.6"	± 0.005		
52.0"	± 0.005	52.0"	± 0.005		
52.4"	± 0.005	52.4"	± 0.005		
52.8"	± 0.005	52.8"	± 0.005		
53.2"	± 0.005	53.2"	± 0.005		
53.6"	± 0.005	53.6"	± 0.005		
54.0"	± 0.005	54.0"	± 0.005		
54.4"	± 0.005	54.4"	± 0.005		
54.8"	± 0.005	54.8"	± 0.005		
55.2"	± 0.005	55.2"	± 0.005		
55.6"	± 0.005	55.6"	± 0.005		
56.0"	± 0.005	56.0"	± 0.005		
56.4"	± 0.005	56.4"	± 0.005		
56.8"	± 0.005	56.8"	± 0.005		
57.2"	± 0.005	57.2"	± 0.005		
57.6"	± 0.005	57.6"	± 0.005		
58.0"	± 0.005	58.0"	± 0.005		
58.4"	± 0.005	58.4"	± 0.005		
58.8"	± 0.005	58.8"	± 0.005		
59.2"	± 0.005	59.2"	± 0.005		
59.6"	± 0.005	59.6"	± 0.005		
60.0"	± 0.005	60.0"	± 0.005		
60.4"	± 0.005	60.4"	± 0.005		
60.8"	± 0.005	60.8"	± 0.005		
61.2"	± 0.005	61.2"	± 0.005		
61.6"	± 0.005	61.6"	± 0.005		
62.0"	± 0.005	62.0"	± 0.005		
62.4"	± 0.005	62.4"	± 0.005		
62.8"	± 0.005	62.8"	± 0.005		
63.2"	± 0.005	63.2"	± 0.005		
63.6"	± 0.005	63.6"	± 0.005		
64.0"	± 0.005	64.0"	± 0.005		
64.4"	± 0.005	64.4"	± 0.005		
64.8"	± 0.005	64.8"	± 0.005		
65.2"	± 0.005	65.2"	± 0.005		
65.6"	± 0.005	65.6"	± 0.005		
66.0"	± 0.005	66.0"	± 0.005		
66.4"	± 0.005	66.4"	± 0.005		
66.8"	± 0.005	66.8"	± 0.005		
67.2"	± 0.005	67.2"	± 0.005		
67.6"	± 0.005	67.6"	± 0.005		
68.0"	± 0.005	68.0"	± 0.005		
68.4"	± 0.005	68.4"	± 0.005		
68.8"	± 0.005	68.8"	± 0.005		
69.2"	± 0.005	69.2"	± 0.005		
69.6"	± 0.005	69.6"	± 0.005		
70.0"	± 0.005	70.0"	± 0.005		
70.4"	± 0.005	70.4"	± 0.005		
70.8"	± 0.005	70.8"	± 0.005		
71.2"	± 0.005	71.2"	± 0.005		
71.6"	± 0.005	71.6"	± 0.005		
72.0"	± 0.005	72.0"	± 0.005		
72.4"	± 0.005	72.4"	± 0.005		
72.8"	± 0.005	72.8"	± 0.005		
73.2"	± 0.005	73.2"	± 0.005		
73.6"	± 0.005	73.6"	± 0.005		
74.0"	± 0.005	74.0"	± 0.005		
74.4"	± 0.005	74.4"	± 0.005		
74.8"	± 0.005				

BARE STEM

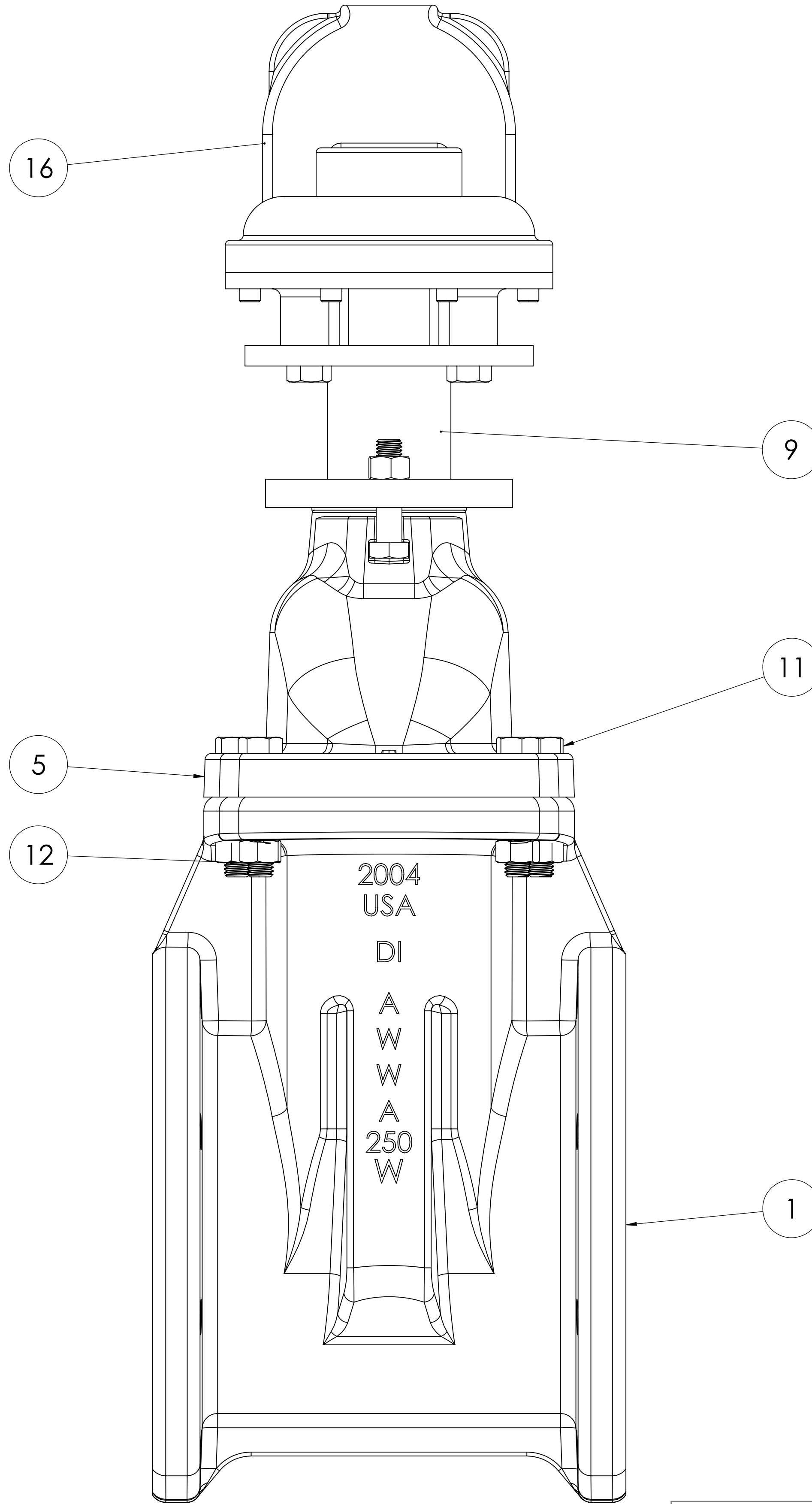
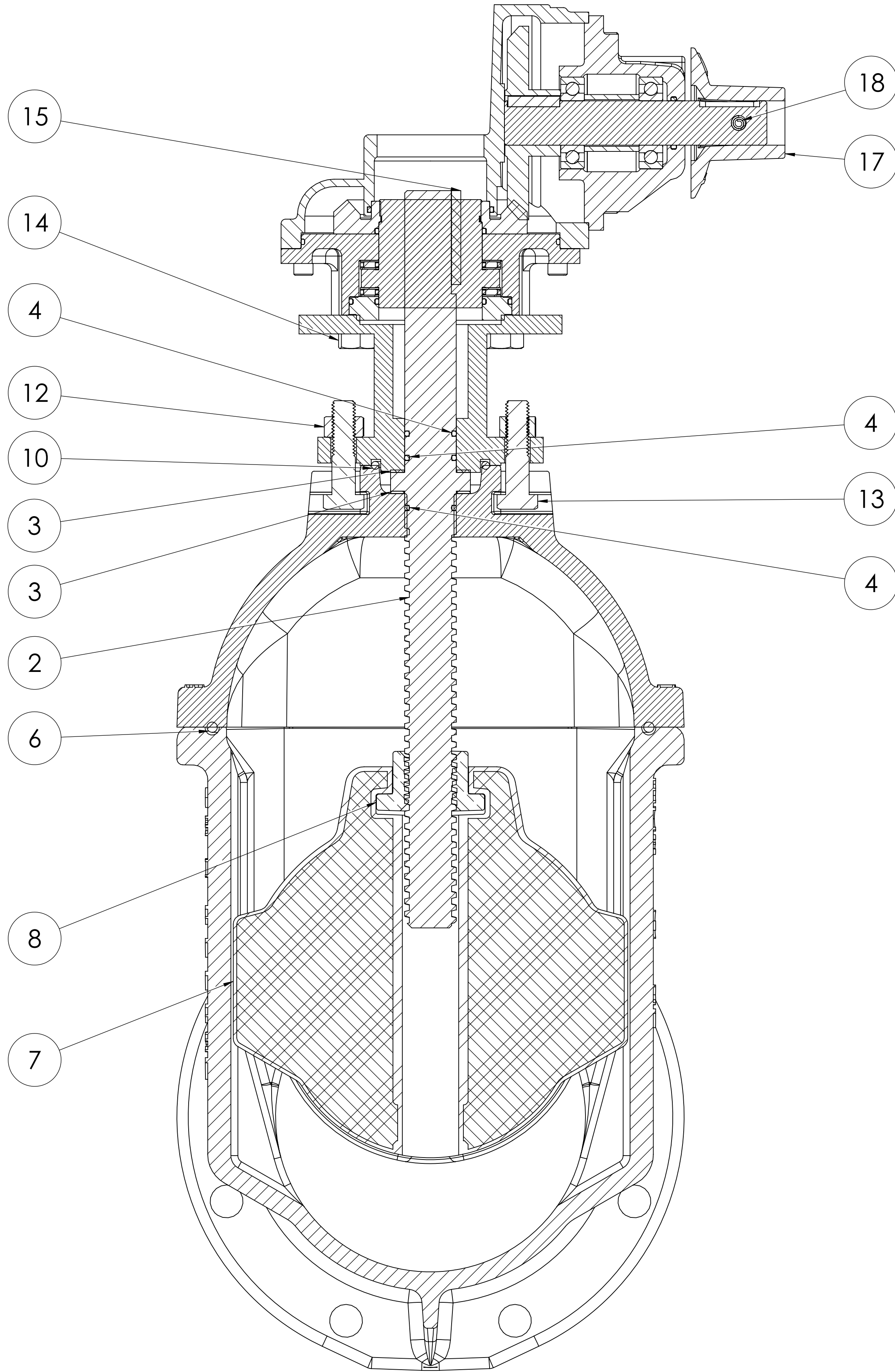


STANDARD FA14 MOUNTING

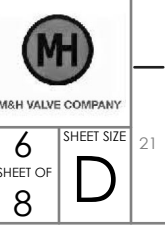
4 X Ø 0.69 HOLES ON Ø 5.50 B.C.

BARE STEM MOUNTING FLG

<small>THIRD ANGLE PROJECTION. STANDARDS: ANSI/ASME Y14.100, Y14.1, AND Y14.141. TOLERANCES AS FOLLOWS UNLESS OTHERWISE SPECIFIED.</small>		<small>PROPERTY OF MCWANE CORPORATION. ALL DIMENSIONS AND IDENTIFICATION ARE PROPRIETARY TO MCWANE CORPORATION AND IS UNREPRODUCIBLE WITHOUT PERMISSION FROM MCWANE CORPORATION. ALL RIGHTS RESERVED.</small>		<small>DATE:</small> <small>DESCRIPTION:</small>
<small>CASTING TOLERANCES:</small> 0.4": ± 0.005 0.8": ± 0.004 1.2": ± 0.003 1.8": ± 0.002 2.4": ± 0.0015 3.0": ± 0.001	<small>MACHINED DIMENSIONS:</small> DECIMALS: ± 0.005 FRACTIONS: ± 0.004 ANGLE: ± 1° SURFACE FINISH: 125 μin RADIUS: ± 0.001 CHAMFER: 2:1	<small>MATERIAL:</small> C	<small>ESTIMATED WEIGHT:</small> LBS.	<small>DATE:</small> 12/2/2020
<small>DESIGNED BY:</small> CW		<small>CHECKED BY:</small> [Blank]	<small>DATE:</small> 12/2/2020	<small>SCALE:</small> 1:5
<small>PROJECT:</small> 08" C509 NRS GEARED RESILIENT WEDGE GATE VALVE		<small>REVISED BY:</small> [Blank]	<small>DATE:</small> [Blank]	<small>SOFTWARE:</small> Solidworks 2018 SP2



THIRD ANGLE PROJECTION. STANDARDS: ANSI/ASME Y14.100, Y14.1, AND Y14.41. TOLERANCES AS FOLLOWS UNLESS OTHERWISE SPECIFIED.		PROPERTY OF MCWANE CORPORATION. ALL DIMENSIONS AND TOLERANCES ARE PROPRIETARY TO MCWANE CORPORATION AND IS UNRELEASABLE. REPRODUCTION OF THIS DRAWING WITHOUT THE WRITTEN CONSENT OF MCWANE CORPORATION IS PROHIBITED. ALL RIGHTS RESERVED.		DATE: 12/2/2020	DESIGNED BY: C
CASTING TOLERANCES:		MATCHED DIMENSIONS:		ESTIMATED WEIGHT:	
0.4":	± 1/32"	DECIMALS:	± 0.005	08" C509 NRS GEARED RESILIENT	
0.8":	± 3/64"	FRACTIONS:	± 1/64"	WEDGE GATE VALVE	
1.6":	± 1/16"	ANGLE:	± 1°	LBS.	
3.2":	± 3/32"	SURFACE FINISH:	125 μin	1:5	
6.4":	± 1/8"	RADIUS:	1/8"	Solidworks 2018 SP2	
MIN RADIUS:	1/8"				
MIN DRAFT:	2°				



<u>ITEM NO.</u>	<u>COMPONENTS</u>	<u>QTY.</u>	<u>SIZE</u>	<u>STANDARD MATERIAL</u>	<u>MATERIAL OPTIONS</u>
1	BODY	1	-	DUCTILE IRON	-
2	STEM	1	-	C95400 (LOW ZINC)	-
3	THRUST WASHER	2	-	ACETAL	C26000
4	O-RING	3	#216	EPDM	BUNA-N
5	COVER	1	-	DUCTILE IRON	-
6	O-RING	1	#447	EPDM	BUNA-N
7	WEDGE	1	-	EPDM/DUCTILE IRON	-
8	STEM NUT	1	-	C87850	C99500 (LOW ZINC)
9	MOTOR MOUNT BRACKET	1	-	COLD ROLLED STEEL	-
10	O-RING	1	#335	EPDM	BUNA-N
11	HEX HEAD CAP SCREW	8	5/8"-11 X 3"	18-8 SS	316 SS
12	HEX NUT	10	5/8"-11	18-8 SS	316 SS
13	HEX HEAD CAP SCREW	2	5/8"-11 X 2 1/4"	18-8 SS	316 SS
14	HEX HEAD CAP SCREW	4	5/8"-11 X 1 1/4"	18-8 SS	316 SS
15	STEM KEY	1	1/4" X 2 1/2"	18-8 SS	316 SS
16	BEVEL GEAR	1	-	-	**SPUR GEAR**
17	OPERATING NUT	1	-	DUCTILE IRON	C86700, ** ϕ 12" HANDWHEEL**
18	COILED SPING PIN	1	10MM X 45MM	302/304 SS	-

VALVES CONFORM WITH THE FOLLOWING STANDARDS

- AWWA C509
- NSF 61

- LOW ZINC BRASS STEM AND STEM NUT AVAILABLE
- 100% DOMESTIC FASTENERS AND ORINGS OPTIONS AVAILABLE
- *OPEN LEFT (COUNTERCLOCKWISE) AND OPEN RIGHT (CLOCKWISE) OPTIONS AVAILABLE*
- TURNS TO OPEN FROM FULLY CLOSED: 26
- AWWA MAXIMUM ALLOWABLE CLOSING TORQUE 150 FT-LBS INTO GEAR
- OPTIONAL HANDWHEEL CAN BE SUBSTITUTED FOR STANDARD 2" SQUARE OP. NUTS.
 - ****NOTE: STANDARD HANDWHEEL SIZE LISTED OUT IN PARTS LIST.****
- MAXIMUM PRESSURE RATING 250 PSI

<small>THIRD ANGLE PROJECTION. STANDARDS: ANSI/ISO 1:10, 1:15, AND 1:1/4. TOLERANCES AS FOLLOWS UNLESS OTHERWISE SPECIFIED.</small>		<small>PROPERTY OF MCWANE CORPORATION. ALL DIMENSIONS AND IDENTIFICATION ARE PROPRIETARY TO MCWANE CORPORATION AND IS UNREPRODUCIBLE WITHOUT PERMISSION FROM CORPORATION OR DIRECTED USE UNLESS OTHERWISE ARRANGED. ALL RIGHTS RESERVED.</small>		
<small>CASTING TOLERANCES:</small> 0.4": ± 0.002 0.8": ± 0.004 1.2": ± 0.006 1.6": ± 0.008 2.0": ± 0.010 2.4": ± 0.012 2.8": ± 0.014 3.2": ± 0.016 3.6": ± 0.018 4.0": ± 0.020 4.4": ± 0.022 4.8": ± 0.024 5.2": ± 0.026 5.6": ± 0.028 6.0": ± 0.030 6.4": ± 0.032 6.8": ± 0.034 7.2": ± 0.036 7.6": ± 0.038 8.0": ± 0.040 8.4": ± 0.042 8.8": ± 0.044 9.2": ± 0.046 9.6": ± 0.048 10.0": ± 0.050	<small>MATCHED DIMENSIONS:</small> DECIMALS: ± 0.005 FRACTIONS: ± 0.001 ANGLE: ± 1° SURFACE FINISH: 125 μin RADIUS: 1/8"	<small>DESCRIPTION:</small> 08" C509 NRS GEARED RESILIENT WEDGE GATE VALVE	<small>ESTIMATED WEIGHT:</small> LBS.	
<small>DESIGNED BY:</small> CW	<small>CHECKED BY:</small>	<small>DATE:</small> 12/2/2020	<small>SCALE:</small> 1:5	<small>SHEET NO.:</small> 7 <small>SHEET OF:</small> 8