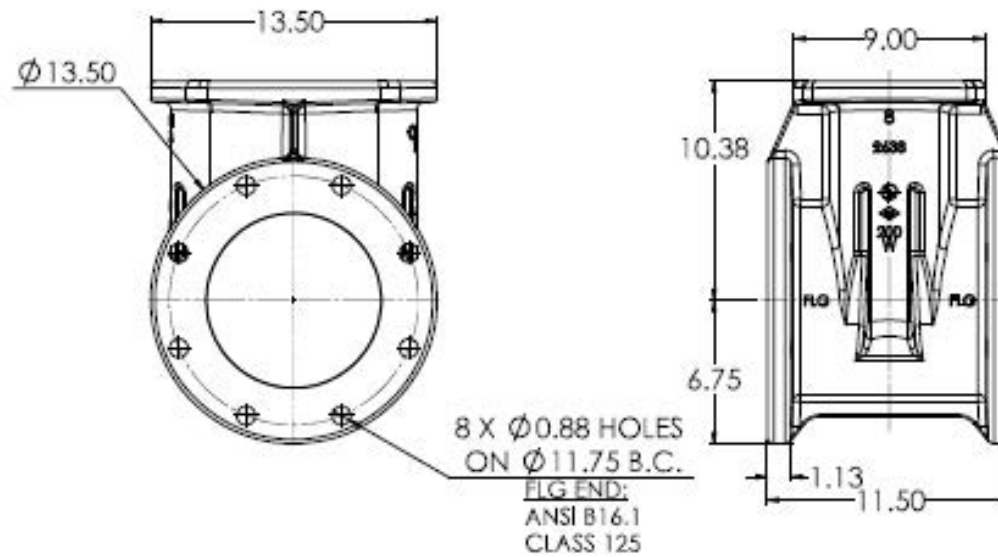


# 08" C515 FLG X FLG

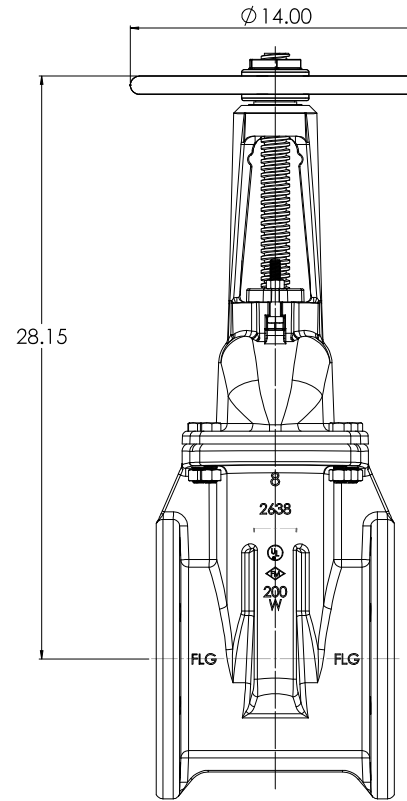
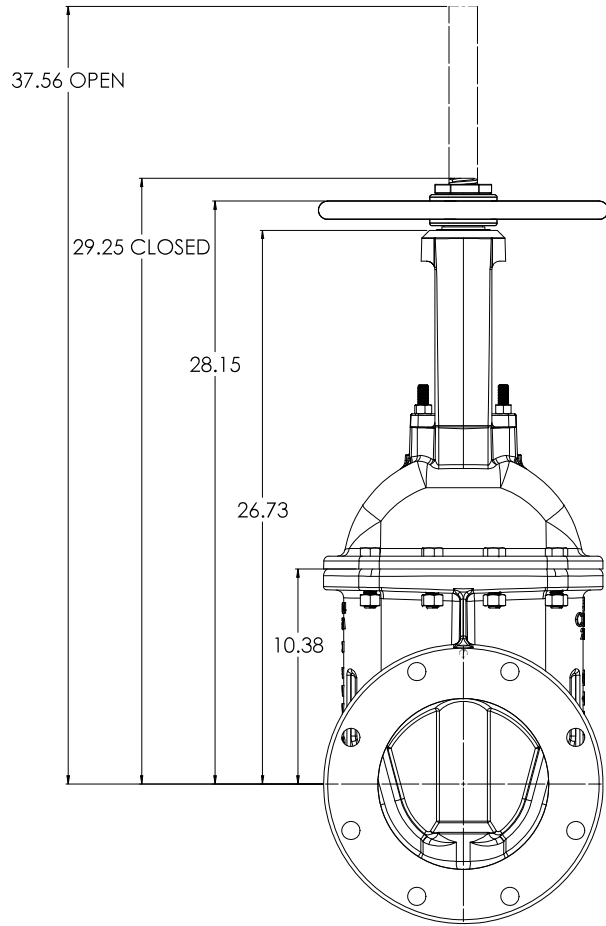


OTHER END CONNECTIONS ARE AVAILABLE UPON REQUEST.

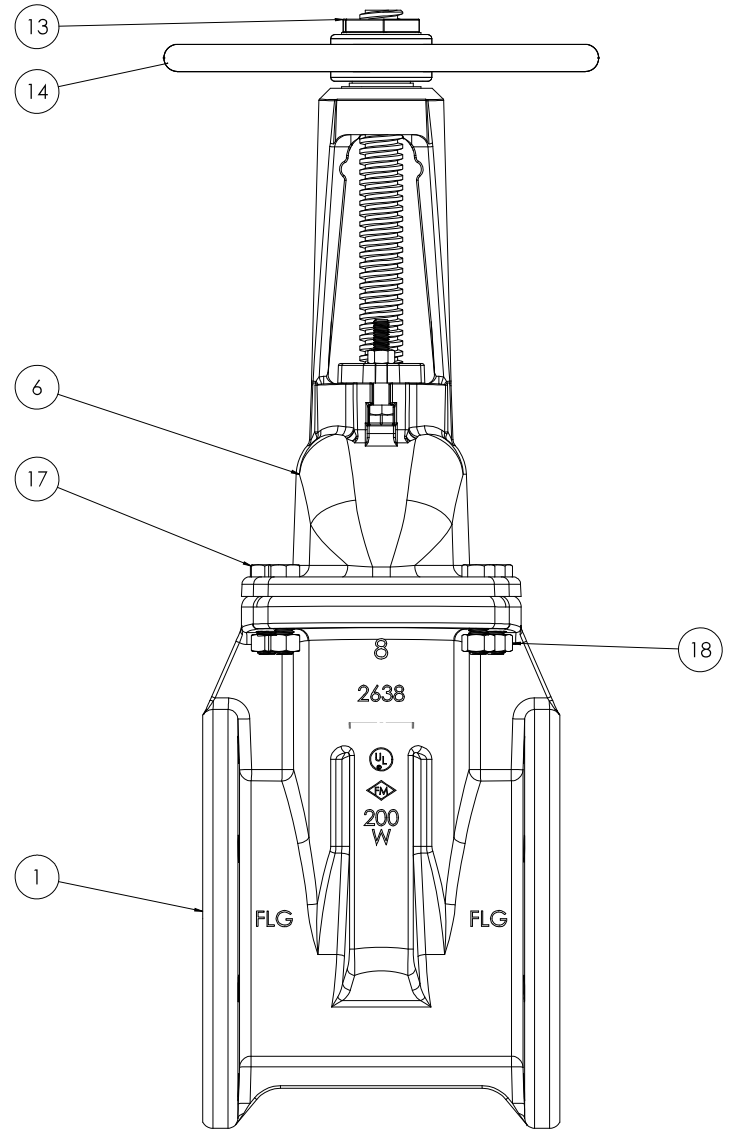
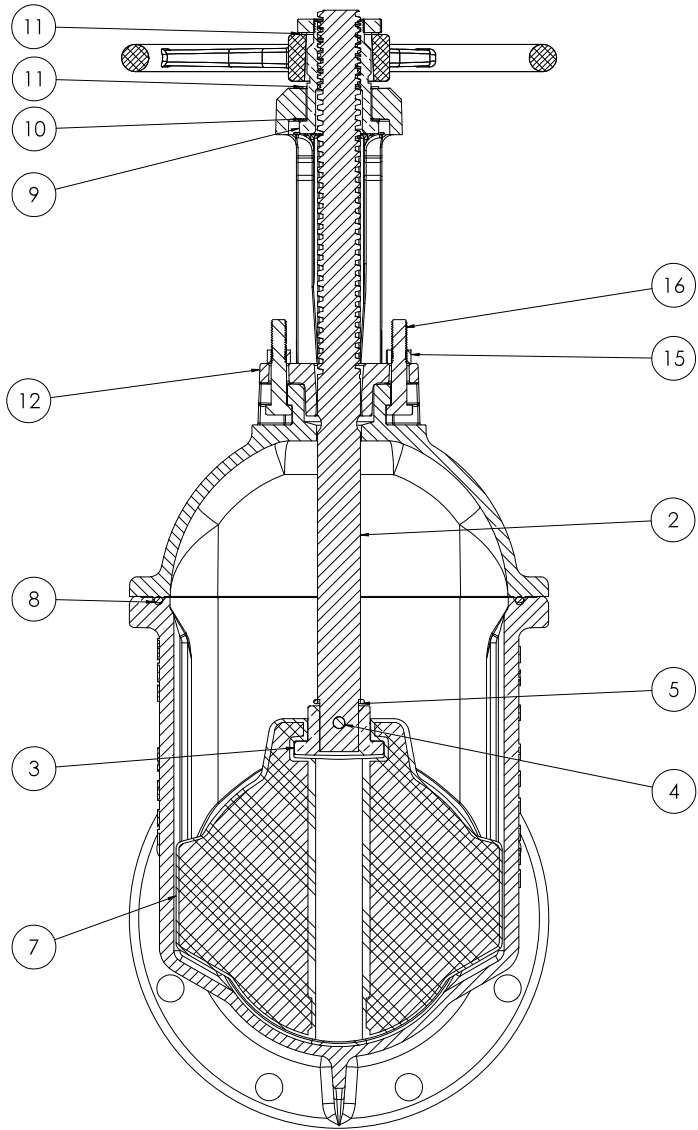
<b>DESIGNED BY</b> J. M. [Signature] <b>CHECKED BY</b> J. M. [Signature] <b>DATE</b> 12/2/2020		<b>REVISED BY</b> [Signature] <b>DATE</b> [Date]		<b>PROJECT</b> 08" C515 OS&Y RESILIENT WEDGE GATE VALVE	
<b>SCALE</b> 1:5		<b>DATE</b> 12/2/2020		<b>REVISED</b> [Date]	
<b>PROJECT</b> CW		<b>SCALE</b> 1:5		<b>DATE</b> 12/2/2020	
<b>PROJECT</b> 08" C515 OS&Y RESILIENT WEDGE GATE VALVE		<b>SCALE</b> 1:5		<b>DATE</b> 12/2/2020	
<b>PROJECT</b> CW		<b>SCALE</b> 1:5		<b>DATE</b> 12/2/2020	



**OS&Y WITH HANDWHEEL**



COMPANY: <b>SOLO WORKS</b> ADDRESS: 12720 200th Ave, Everett, WA 98203 PHONE: (425) 335-1234 FAX: (425) 335-1235 WWW: www.soloworks.com		PROJECT: <b>08" CS15 OS&amp;Y RESILIENT WEDGE GATE VALVE</b> DRAWING NO: <b>LBS-GATE VALVE</b> SCALE: <b>1:5</b> DATE: <b>12/2/2020</b>		SHEET NO: <b>3</b> TOTAL SHEETS: <b>6</b>	
DESIGNED BY: <b>AW</b> CHECKED BY: <b>AW</b> DATE: <b>12/2/2020</b>	APPROVED BY: <b>AW</b> DATE: <b>12/2/2020</b>	SOLO WORKS 2016 SP2			



COMPANY: <b>WALTON INDUSTRIES, INC.</b> 10000 W. 100th St., Minneapolis, MN 55426 TEL: 612-895-1000 FAX: 612-895-1001 WWW: www.waltoninc.com		PROJECT: <b>08" CS15 CS&amp;Y RESILIENT WEDGE GATE VALVE</b>		
DATE: 12/22/2020		SCALE: 1:5		
DRAWN BY: <b>CW</b>		CHECKED BY: <b>12/22/2020</b>		SHEET NO: <b>4</b> TOTAL SHEETS: <b>6</b>
PROJECT NO: <b>1222/2020</b>		DRAWING NO: <b>1:5</b>		

<u>ITEM NO.</u>	<u>COMPONENT</u>	<u>QTY.</u>	<u>SIZE</u>	<u>STANDARD MATERIAL</u>	<u>MATERIAL OPTIONS</u>
1	BODY	1	-	DUCTILE IRON	-
2	STEM	1	-	C65500	304 SS, 316 SS
3	STEM NUT	1	-	C87850	C87610, C87845, C89833, C99500
4	DRIVLOK PIN	1	3/8" X 2"	303 SS	-
5	O-RING	1	#220	EPDM	BUNA-N
6	COVER	1	-	DUCTILE IRON	-
7	WEDGE	1	-	EPDM/DUCTILE IRON	-
8	O-RING	1	#447	EPDM	BUNA-N
9	TOP STEM NUT	1	-	C86700	-
10	THRUST WASHER	1	2 5/32"	C26000	-
11	THRUST WASHER	2	-	NYLATRON	-
12	GLAND	1	-	CAST IRON	-
13	HOLD DOWN NUT	1	-	C87850	C87610
14	HANDWHEEL	2	Ø 14"	DUCTILE IRON	-
15	HEX NUT	2	1/2"-13	18-8 SS	316 SS
16	HEX HEAD CAP SCREW	2	1/2"-13 X 2 3/4"	18-8 SS	316 SS
17	HEX HEAD CAP SCREW	8	5/8"-11 X 2 1/2"	18-8 SS	316 SS
18	HEX NUT	8	5/8"-11	18-8 SS	316 SS

- VALVES CONFORM WITH THE FOLLOWING STANDARDS
  - AWWA C509
  - NSF 61
- LOW ZINC BRASS STEM AND STEM NUT AVAILABLE
- 100% DOMESTIC FASTENERS AND ORINGS OPTIONS AVAILABLE
- *OPEN LEFT* (COUNTERCLOCKWISE) AND *OPEN RIGHT* (CLOCKWISE) OPTIONS AVAILABLE
- TURNS TO OPEN FROM FULLY CLOSED: 26
- AWWA MAXIMUM ALLOWABLE CLOSING TORQUE 150 FT-LBS

<small>           COMPANY: STAINLESS STEEL INDUSTRIES, INC.            ADDRESS: 1000 W. 10TH AVENUE, SUITE 100, DENVER, CO 80202            PHONE: (303) 733-1111            FAX: (303) 733-1112            WWW: WWW.STAINLESSSTEELINDUSTRIES.COM         </small>		<small>           PRODUCT: 08" CS15 CS&amp;Y RESILIENT WEDGE GATE VALVE            MATERIAL: LBS.            WEIGHT: 150            DIMENSIONS: 12" X 12" X 12"         </small>		<small>           DATE: 12/20/2020            TIME: 1:5            DRAWN BY: S            CHECKED BY: D         </small>
--	--	--	--	--